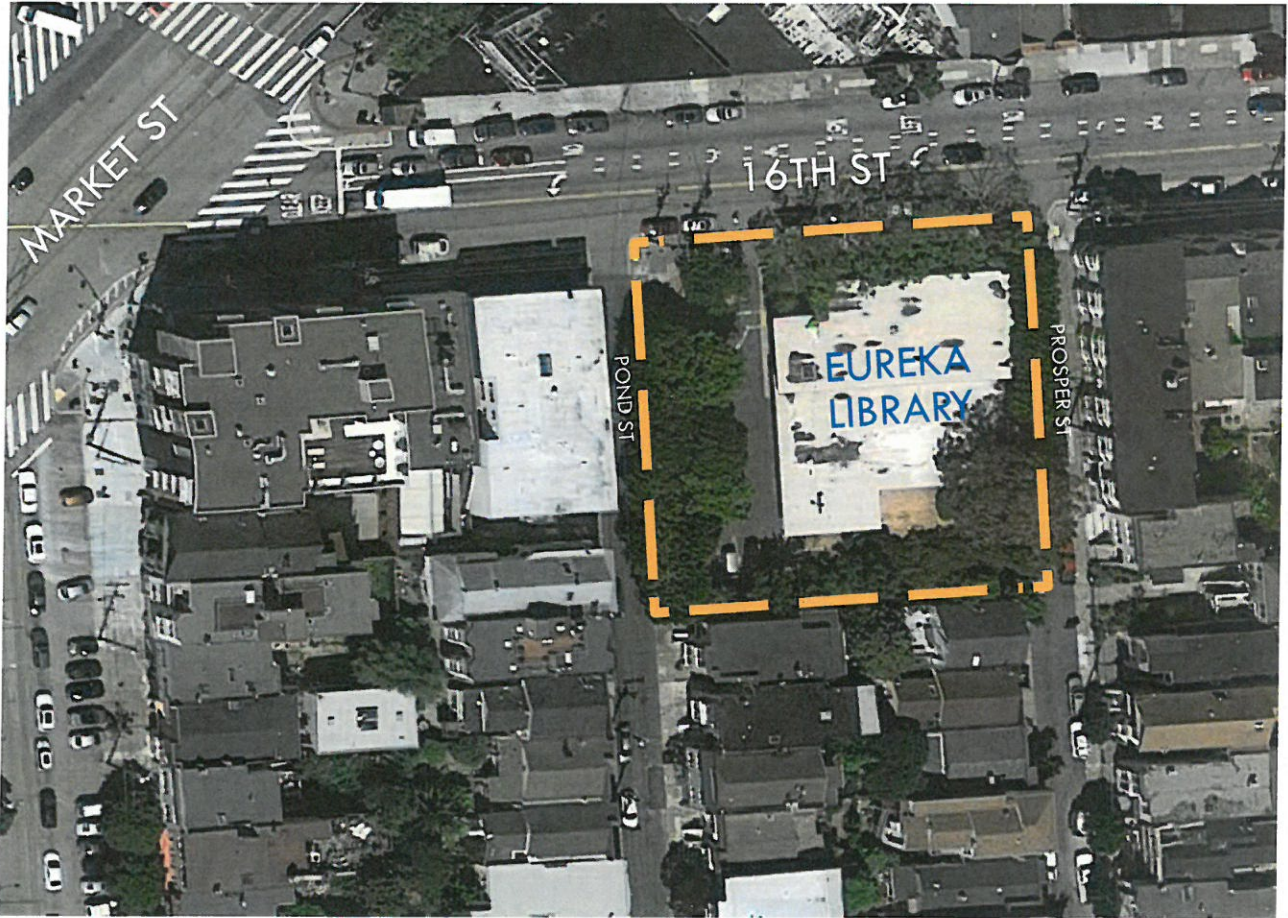


EUREKA VALLEY / HARVEY MILK MEMORIAL BRANCH LIBRARY

COMMUNITY MEETING 3
WEDNESDAY, APRIL 5, 2017



Prepared by:
San Francisco Public Works
Building, Design, & Construction
Landscape Architecture Section



Jasmine Kaw, Landscape Architect



Building Design & Construction

AGENDA

- I. Welcome:**
 - Agenda
 - Introductions
 - Meeting Objectives

- II. Final Drawing Review: Phase I**
 - 16th and Prosper Streets

- III. Initial Drawing Review: Phase II**
 - 16th and Pond Streets

- IV. Phase II Discussion and Next Steps**

- V. Closing Remarks**

PHASE I





Prosper Street Frontage.....

- COBBLED PAVING
- BOULDERS
- HARDY ORNAMENTAL PLANTING
- EVALUATE AND UPDATE SIGNAGE
- ORNAMENTAL RAILING AT LOW CURB

16th Street Frontage.....

- COBBLED PAVING
- BOULDERS
- HARDY ORNAMENTAL PLANTING
- EVALUATE AND UPDATE SIGNAGE
- ORNAMENTAL RAILING AT LOW CURB



Cobbled Paving



Landforms in Planting Areas



Ornamental Railing

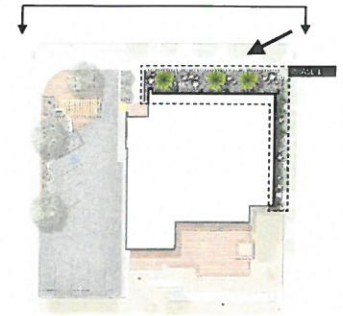


Boulders



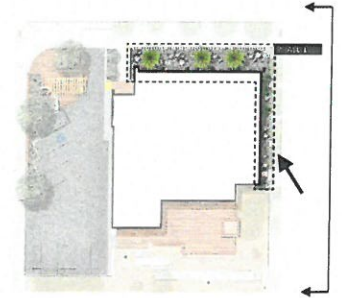
Hardy Ornamental Planting





Key Plan

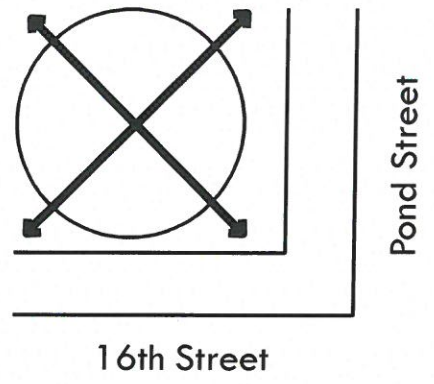
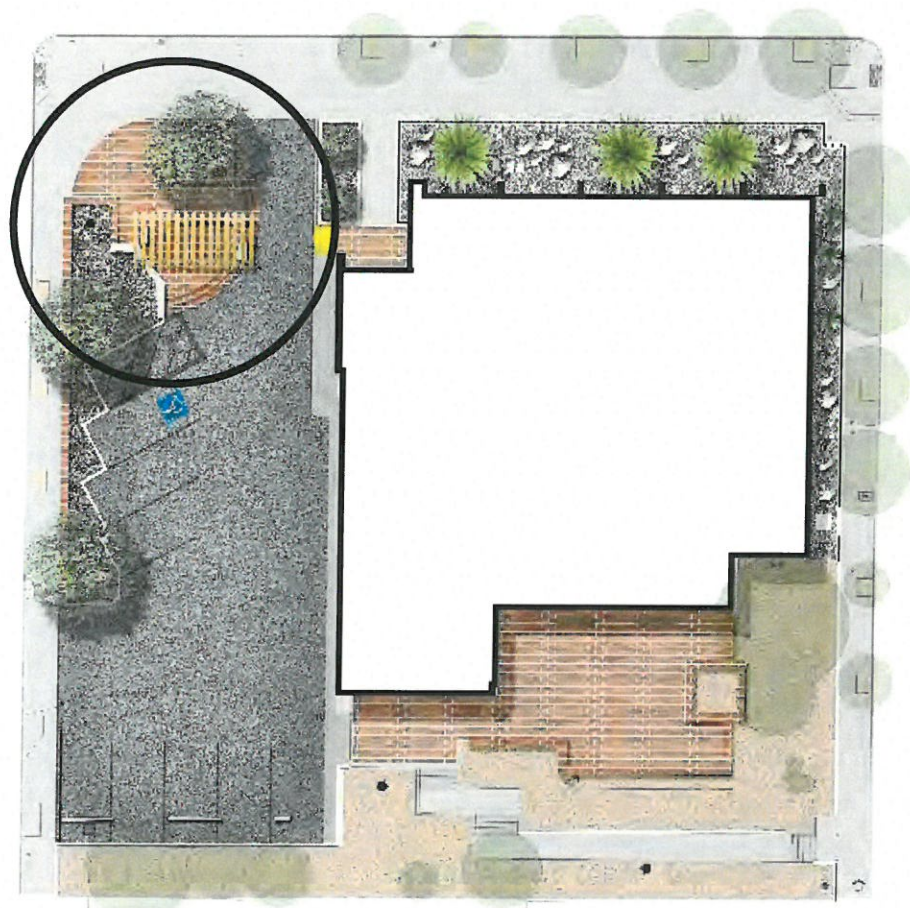


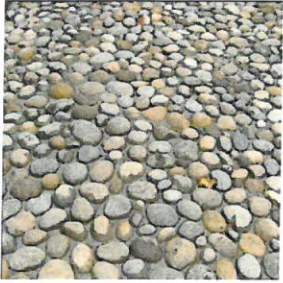


Key Plan



PHASE II





Cobbled Paving

+



Landforms in Planting Areas

+



Ornamental Railing

+



Boulders

+



Hardy Ornamental Planting





**Parking Lot w/
Expanded Landscaping Option**

- COBBLED PAVING
- BOULDERS
- HARDY ORNAMENTAL PLANTING
- ORNAMENTAL RAILING AT CURBS, WALLS, AND PLANTING AREAS
- EVALUATE AND UPDATE SIGNAGE
- IMPROVED DRIVEWAY ACCESS TO PARKING AREA
- NEXT GAIN OF ONE PARKING SPACE

Cobble Paving

Boulder

Ornamental Railing

Hardy Ornamental Planting

View towards Proposed Bike Racks



QUESTIONS?

For additional comments or questions, please contact:

Cathy Delneo, Chief of Branches

Cathy.Delneo@sfpl.org