

MERCED BRANCH LIBRARY RENOVATION



LIBRARY COMMISSION PRESENTATION 3.20.08

SF BUREAU OF ARCHITECTURE

DEPARTMENT OF PUBLIC WORKS
CITY AND COUNTY OF SAN FRANCISCO

EXISTING SITE ANALYSIS

Site Characteristics

- Library is situated in residential block in Southwest area of SF
- The library is discretely sited behind trees and shrubs
- The main entrance is not visible from the major thoroughfare (19th Avenue)
- Close proximity to multiple points of interest: Stonestown Galleria, SFSU, and Junipero Serra Clubhouse





SF BUREAU OF ARCHITECTURE
Schematic Design/Library Commission Presentation
20 MARCH 2008

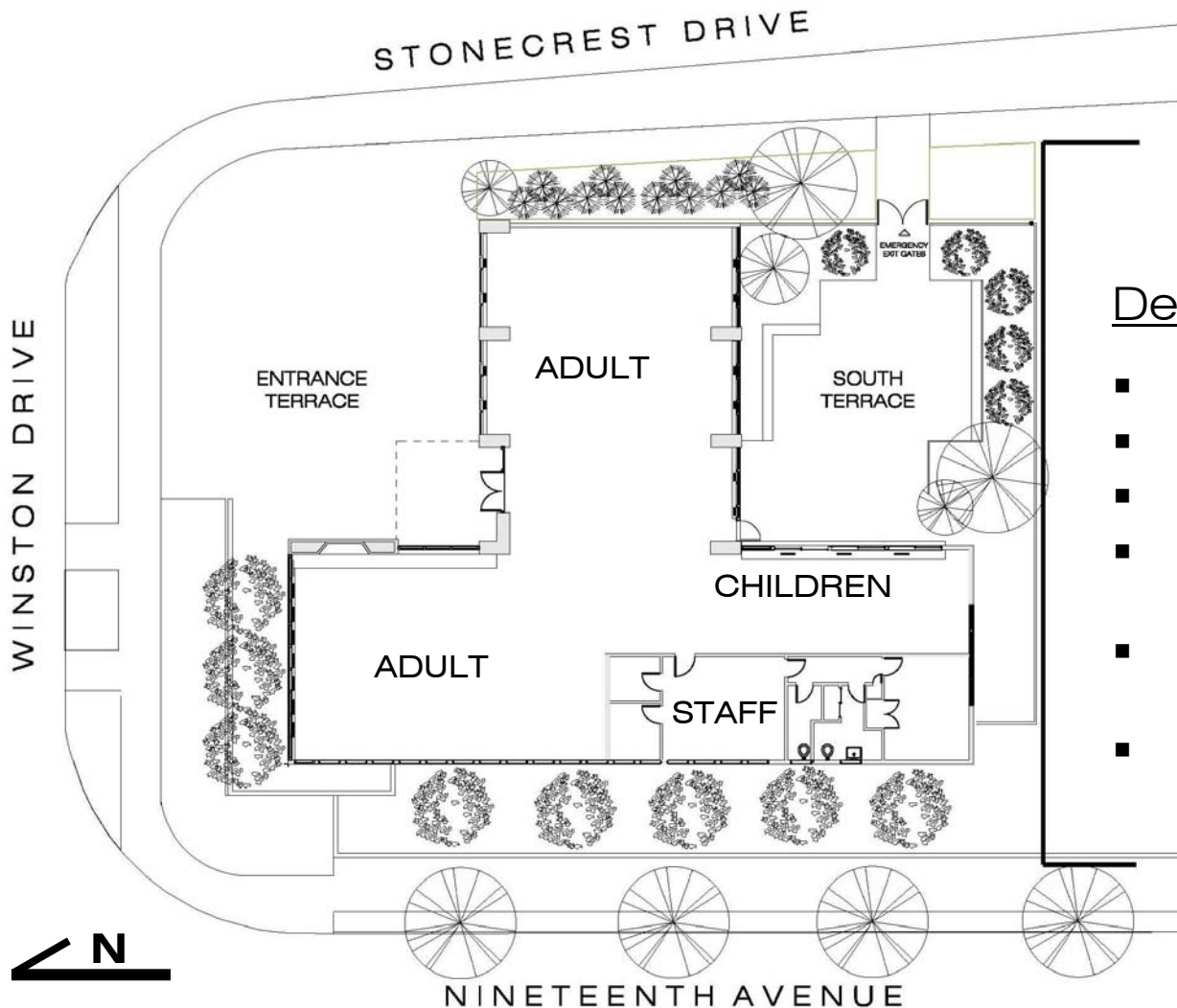
MERCED BRANCH LIBRARY



EXISTING FLOOR PLAN

Deficiencies

- Insufficient staff work areas
- Cramped children's area
- Insufficient exit separation
- Non compliant with ADA in both access and restrooms
- Requires structural upgrade for seismic strengthening
- Existing building materials & systems are energy inefficient



SF BUREAU OF ARCHITECTURE

Schematic Design/Library Commission Presentation
20 MARCH 2008

MERCED BRANCH LIBRARY



DESIGN GOALS

- Improved service to the community
- Incorporation of latest information technology
- Better work areas for staff
- Complete ADA Accessibility
- Seismically safe building
- Maximize energy efficiency
- LEED Silver Certification

DESIGN CONCEPT

Features

- Modest increase in size for better operations
- Increased children's area, with flexible space for programming
- Centralized circulation desk and service area
- Open floor plan with good sight lines from the service desk
- Preservation of South Terrace for active use
- Functioning doors and access provided to South Terrace



Legend



Circulation



Children



Staff



Teen



Adult

SF BUREAU OF ARCHITECTURE

Schematic Design/Library Commission Presentation
20 MARCH 2008

MERCED BRANCH LIBRARY



MERCED BRANCH LIBRARY PROGRAM		
Item	Existing	Proposed
Total Square Feet	5,276	6,391
Shelving Count (linear feet)	2,557	2,594
Adult Collections	1,945	1,905
Teen Collections	80	120
Children's Collections	532	569
Seating (all types)	61	62
Adult Collections	43	31
Teen Collections	0	6
Children's Collections	18	25
Computers	8	11
Adult	6	6
Teen	0	2
Children	2	3

SF BUREAU OF ARCHITECTURE

Schematic Design/Library Commission Presentation
20 MARCH 2008

MERCED BRANCH LIBRARY





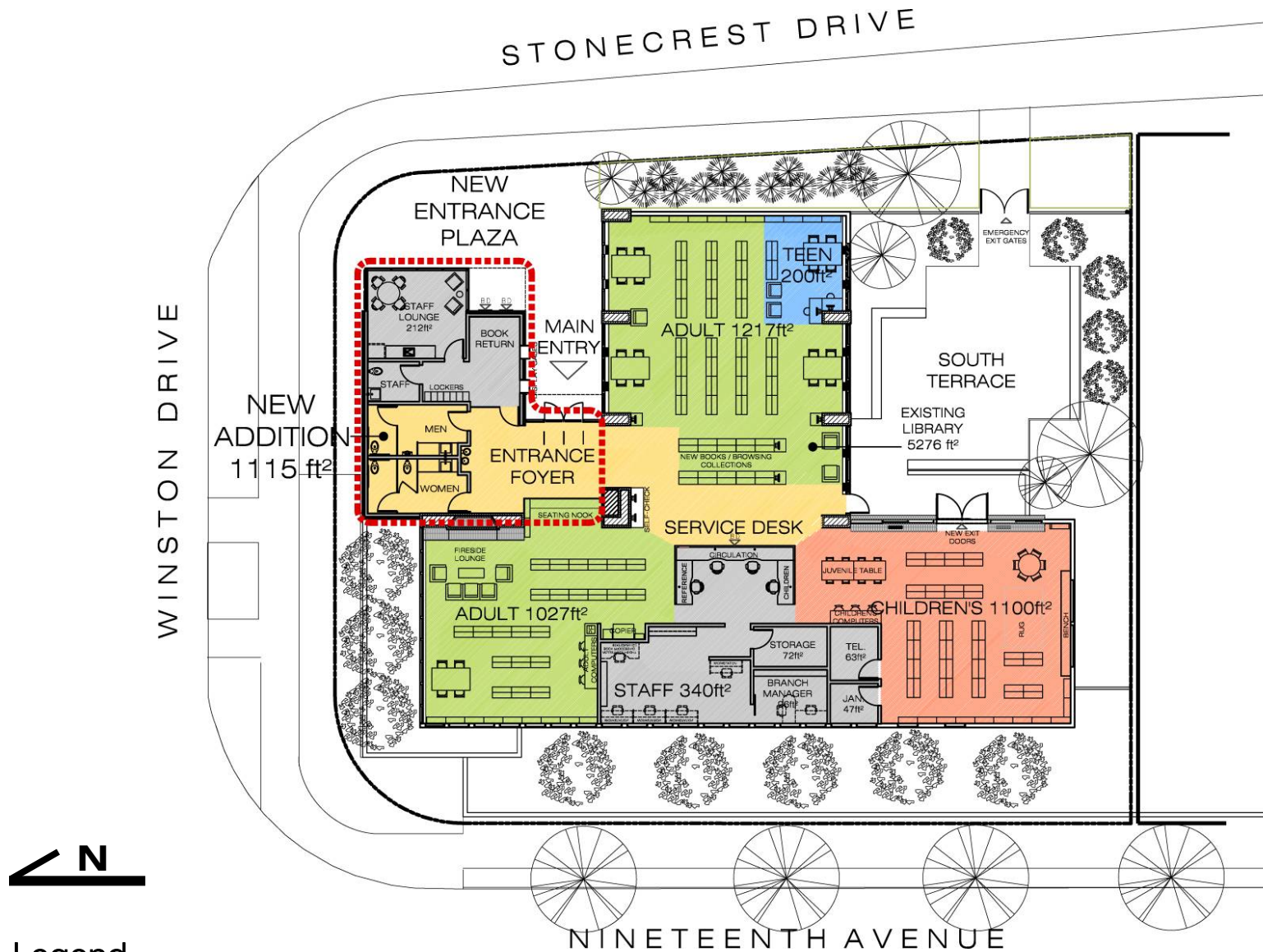
EXISTING: 5,276 SQ. FT

PROPOSED: 6,391 SQ. FT

SF BUREAU OF ARCHITECTURE
Schematic Design/Library Commission Presentation
20 MARCH 2008

MERCED BRANCH LIBRARY





Legend

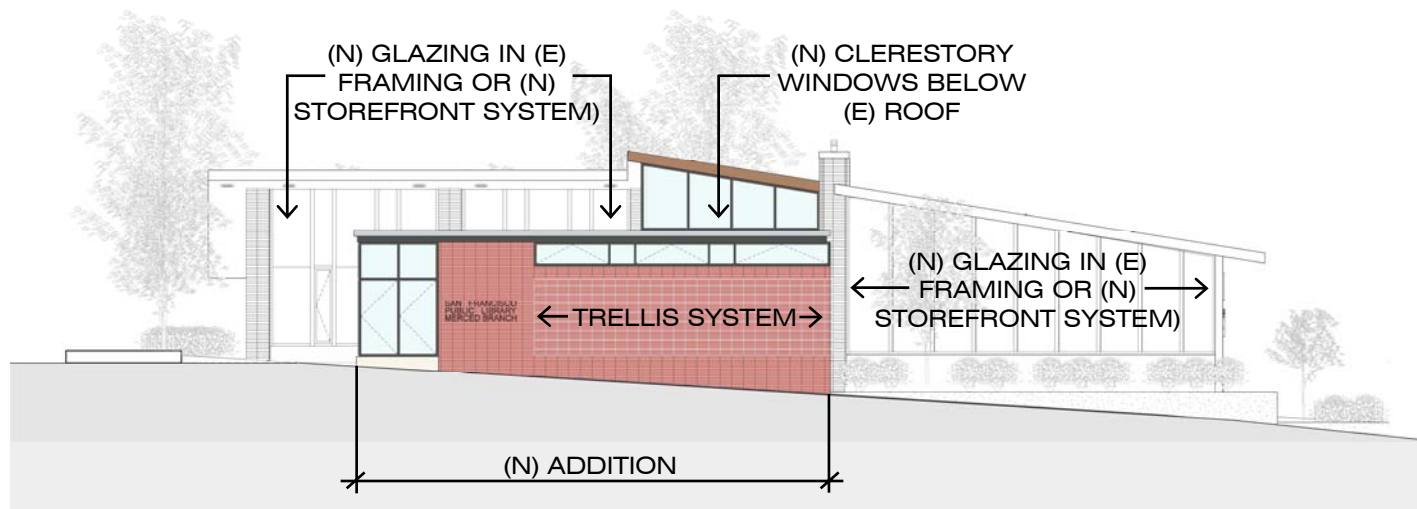
- Circulation
- Children
- Staff
- Teen
- Adult

SF BUREAU OF ARCHITECTURE

Schematic Design/Library Commission Presentation
20 MARCH 2008

MERCED BRANCH LIBRARY

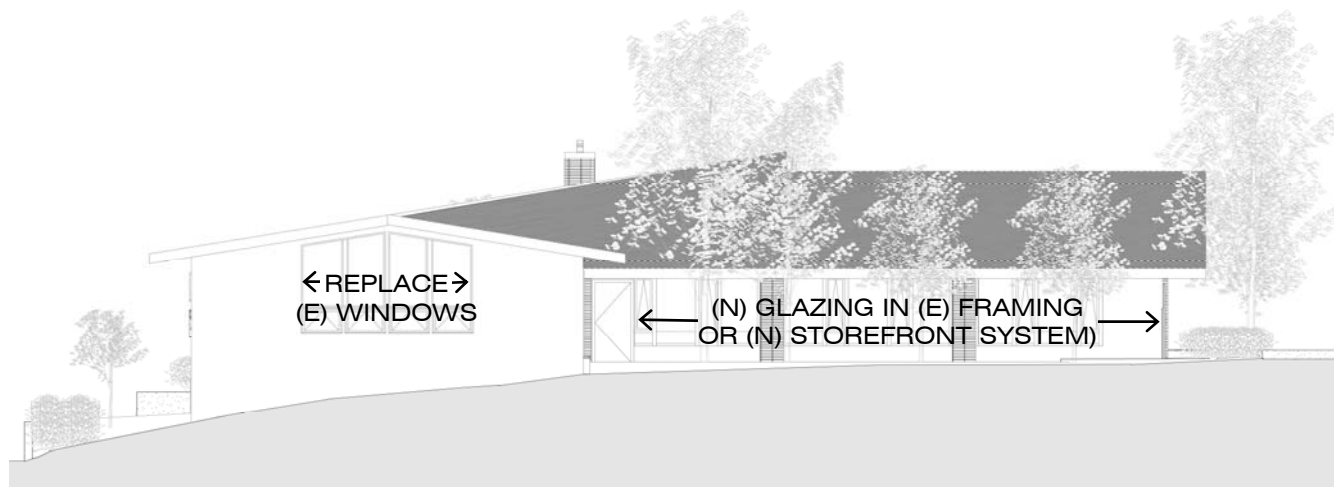




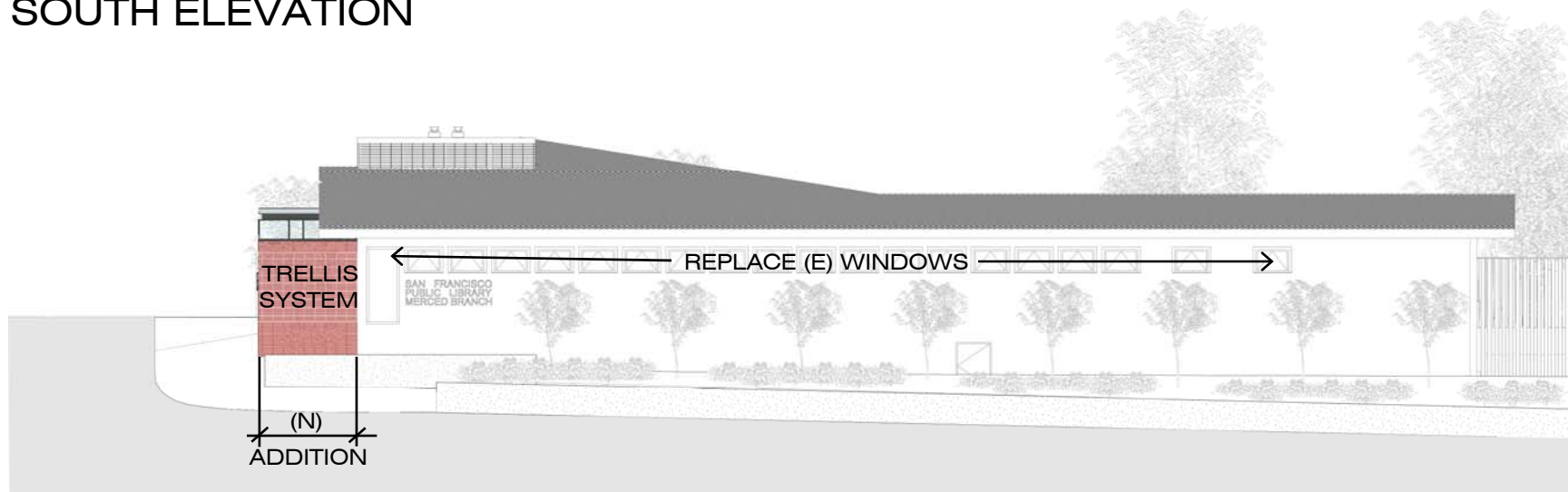
NORTH ELEVATION, WINSTON DRIVE



EAST ELEVATION, STONECREST DRIVE



SOUTH ELEVATION



WEST ELEVATION, 19TH AVENUE

EXTERIOR PERSPECTIVES



STONECREST DRIVE



19TH AVENUE AND WINSTON

SF BUREAU OF ARCHITECTURE

Schematic Design/Library Commission Presentation
20 MARCH 2008

MERCED BRANCH LIBRARY



NEW ENTRANCE



SF BUREAU OF ARCHITECTURE
Schematic Design/Library Commission Presentation
20 MARCH 2008

MERCED BRANCH LIBRARY





ADULT LOUNGE



EAST WING

INTERIOR VIEWS



SF BUREAU OF ARCHITECTURE

Schematic Design/Library Commission Presentation
20 MARCH 2008

MERCED BRANCH LIBRARY

