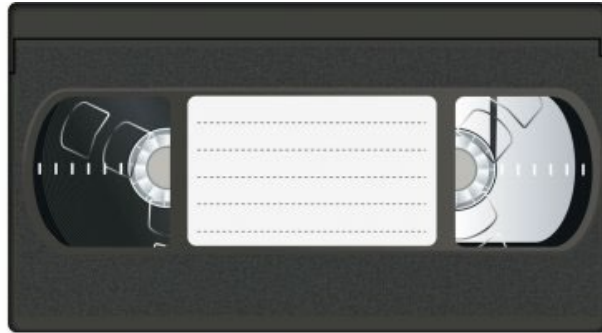


# Transferring VHS



## Step 1: Setup

### What to do with the Switcher

- Make sure the Switcher is set to **Input 1: VCR**



### What to do with the VHS deck

- Make sure the VHS deck is powered on.
- Gently load your tape into the VHS deck.
- The tape should start playing automatically.

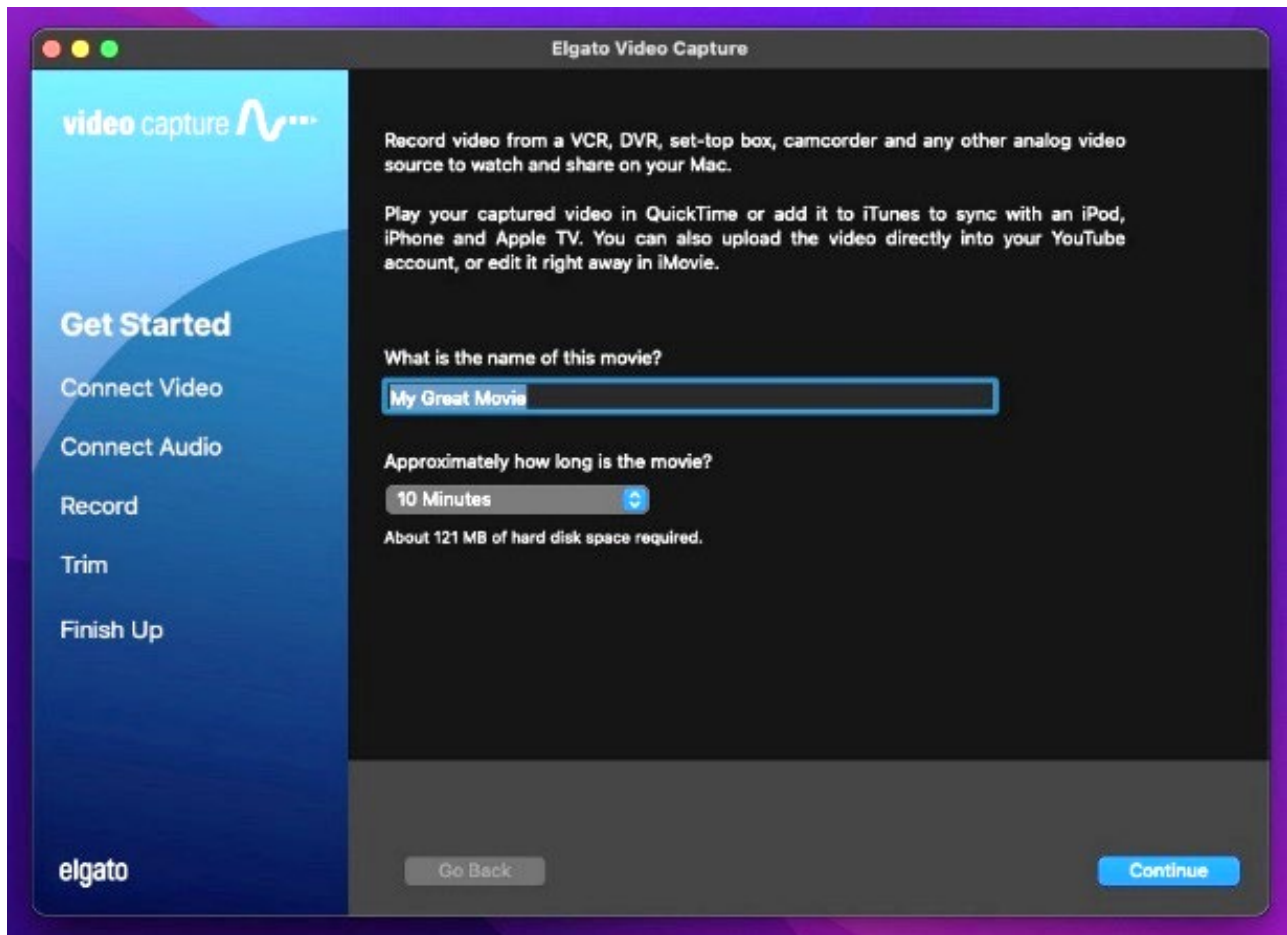
## Step 2: Open Elgato Video Capture

- Close all open programs, if any, on the Mac.
- Click on the **Elgato Video Capture** icon in the dock at the bottom of the screen.



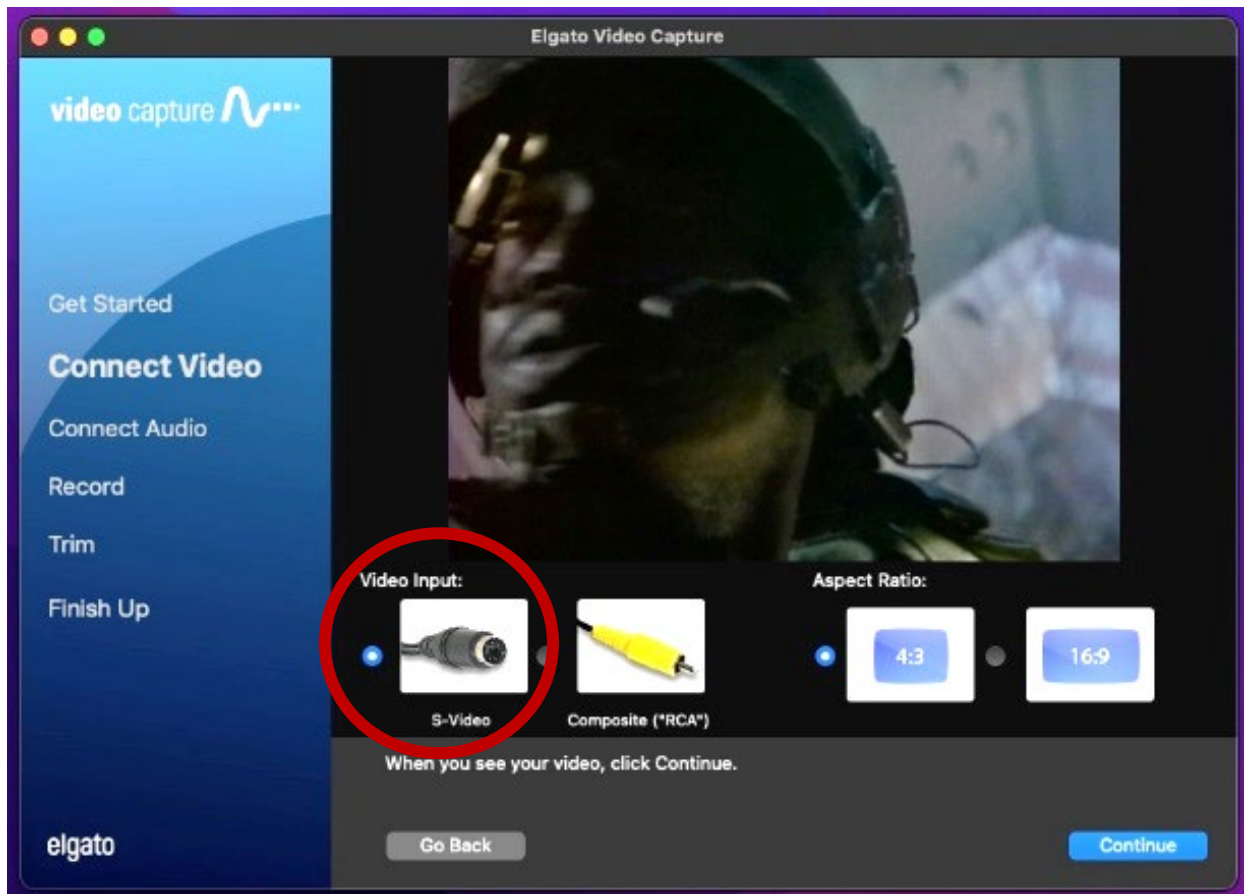
### Step 3: Getting started

- Elgato Video Capture will open to this window:



- Give your movie a title.
- Click CONTINUE.

## Step 4: Connect video



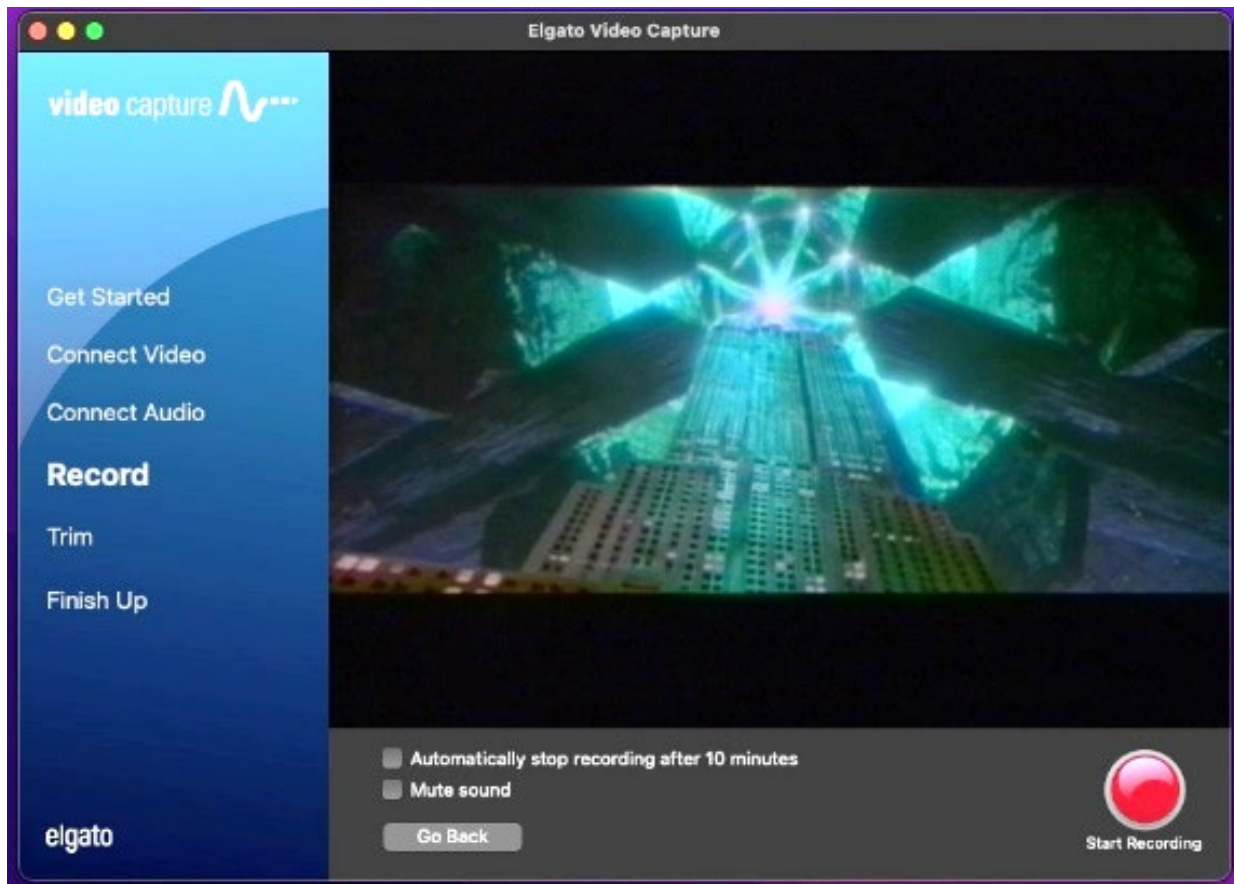
- You should be able to see your movie playing on the **Elgato Video Capture** software. If not, press the PLAY button on the VCR to preview your movie.
- Make sure S-VIDEO is selected in the software under **Video Input**.
- Use the **Aspect Ratio** option to select the most appropriate ratio for your movie. For most home movies, use 4:3.
- Click CONTINUE.
- If you can hear audio, but cannot see your video in the **Elgato** software, make sure all other programs are closed and restart **Elgato**. If problems persist, contact an SFPL staff member.

## Step 5: Connect audio



- With your movie playing, you should see moving green bars that represent your movie's audio track. Make sure you are viewing a portion of your video that contains audio.
- If both audio and video signals appear correct, press STOP on the VCR, then press REWIND to go back to the beginning of the tape.
- Select CONTINUE in **Elgato**.

## Step 6: Record



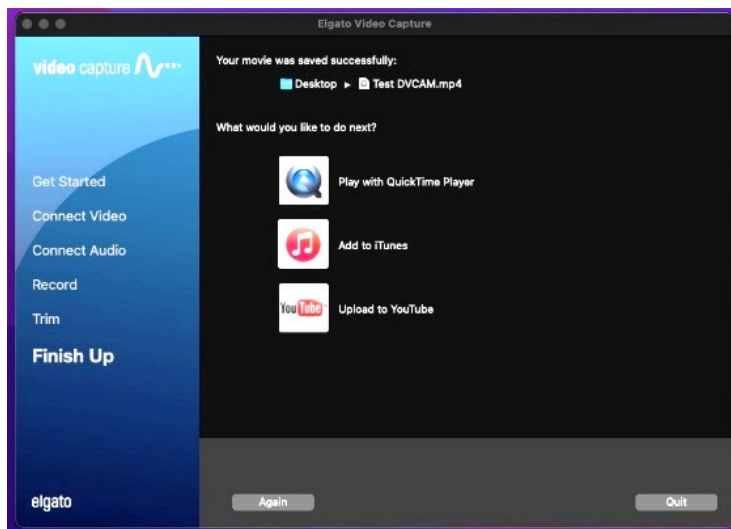
- Select START RECORDING.
- Press PLAY on the VCR.
- You should again see your movie playing in the **Elgato** window.
- When you want to stop recording, press the STOP RECORDING button in the software, then press STOP on the VCR.

## Step 7: Trim (OPTIONAL)



- **If you are unsure of your video editing skills, this step can be skipped, as it cannot be undone once you click CONTINUE. We highly recommend skipping this step.**
- Move the triangular tabs underneath the video screen to trim the ends of your digitized movie.
- Click CONTINUE.

## Step 8: Finish up



- **IMPORTANT: DO NOT** click AGAIN or QUIT before the file is created, or you might lose all your work!
  - Before starting on another tape, make sure to let the program finish creating the video file for what you just digitized. Please also test the newly created file by following the step below.

- Once the file has finished rendering, select Play with QuickTime Player. If you choose this option and get an error message, your movie is still rendering. Wait a few seconds and try selecting Play with QuickTime Player again.
- After you have tested your file, if you want to digitize another movie, click AGAIN and go back to **Step 1**.
- If you are finished, click QUIT.

### **Step 9: Save your video on your storage device**

- Plug in your storage device to the USB hub.
- Drag your movie from the desktop to the disk image of your storage device.
- Once the file transfer has finished, safely eject your device from the computer by dragging its disk image to the eject icon (trash can) on the bottom of the desktop. Or you can click on the drive and select **File → Eject**.
- Eject your tape from the VCR. If necessary, use the diagram below to find the Eject button.
- Please rewind your VHS tape in the rewinder on the countertop and **not** in the VCR.

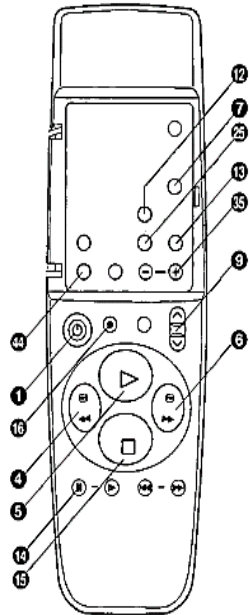


**Don't forget your tape and storage device!**



## Controls, Indicators and Connectors

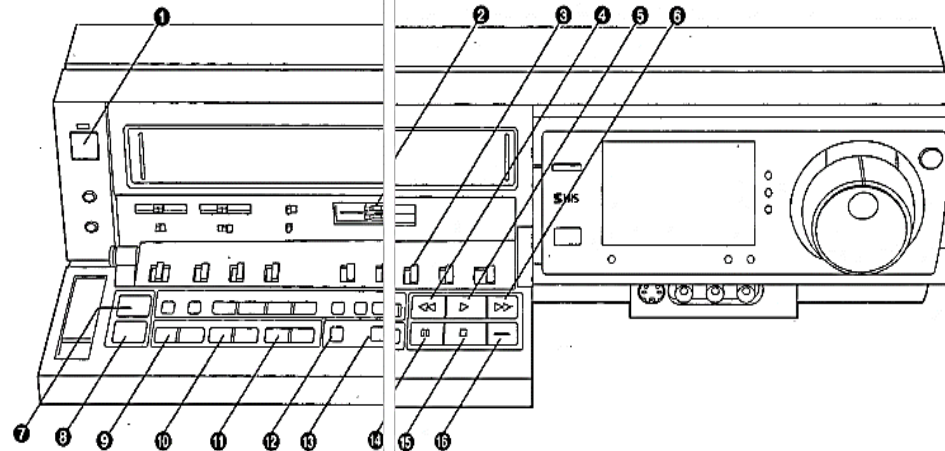
Controls, Indicators and Connectors



### Basic Controls

- 1 POWER Button with Indicator**  
Turns the VCR on and off.  
• Auto power on  
Inserting a video cassette automatically turns the VCR on.
- 2 HI-FI REC LEVEL Control**  
Adjusts the Hi-Fi recording level so that the peak reaches about +4 dB on the Audio Level Meter.
- 3 S-VHS Selector**  
Selects the correct tape recording mode.  
ON: S-VHS cassettes are recorded in the S-VHS System.  
• The S-VHS indicator is lit.  
OFF: S-VHS cassettes are recorded in the VHS system.  
• The S-VHS indicator is not lit.

(12)



- VHS cassettes are recorded automatically in the VHS system irrespective of the switch position.
  - For playback, it is not necessary to operate this switch.
  - S-VHS recording cannot be played back on a conventional VHS VCR.
- 4 REW Button**  
Use to rewind the tape rapidly. "<<" appears on the VCR Display.  
When this button is held pressed during Normal playback or Rewind operation, the picture is played back at higher speed in reverse direction. (Review Playback)  
If you tap this button during Normal Playback, Review Playback remains activated. Press PLAY to resume Normal Playback.
  - 5 PLAY Button**  
Starts normal playback. "▶" is lit on the VCR Display.
  - 6 FF Button**  
Used to advance the tape rapidly. "▶▶" appears on the VCR Display.  
When this button is held pressed during Normal playback or Fast Forward operation, the picture is played back at higher speed in forward direction. (Cue Playback)  
If you tap this button during Normal Playback, Cue Playback remains activated. Press PLAY to resume Normal Playback.

- 7 VCR/TV Button**  
Selects "VCR" or "TV" operation mode.
- 8 EJECT Button**  
Eject the cassette.  
• If this button is pressed to eject a cassette loaded in the VCR when the power is turned off, the VCR is turned on for automatic ejection and, afterwards, turned off.
- 9 Channel ∇ and ∧ Buttons**  
Selects the program positions (channels), the VCR can memorize TV stations in 99 program positions.
- 10 OTR ON + and - Buttons**  
Used to set the OTR (One-touch Timer Recording) starting time.
- 11 OTR OFF + and - Buttons**  
Used to set the OTR ending time.
- 12 AUDIO OUT Button**  
Selects the audio track. Each time you press this button, the audio track changes as follows:  
Hi-Fi stereo (L and R) → Hi-Fi mono left (L) → Hi-Fi mono right (R) → Normal (Hi-Fi off) → Hi-Fi Stereo...

- 13 RECORDING SP/SLP Button**  
Selects the recording tape speed.  
"SP" for normal tape speed gives the best picture quality.  
"SLP" for one-third tape speed gives the longest (3 times) normal recording time.  
• The VCR selects the correct tape speed during playback.
- 14 PAUSE/STILL Button**  
Used to interrupt recording temporarily (Recording Pause).  
Pressing this button again resumes recording.  
• Also used to view a still picture during playback "00" appears on the VCR Display. Pressing this button again resumes playback.  
• The VCR automatically switches to the Stop mode to protect the tape and the video heads if Recording Pause or Still Playback continues for more than 5 minutes.
- 15 STOP Button**  
Stops Recording or Playback.
- 16 REC Button**  
Starts Recording. ("▶ REC" appears on the VCR Display.)

(13)