



LIBRARIES OF SAN FRANCISCO



ANZA



BAYVIEW



BERNAL HEIGHTS



CHINATOWN



EUREKA VALLEY



EXCELSIOR



GLEN PARK



GOLDEN GATE VALLEY



INGLESIDE



MAIN



MARINA



MERCED



MISSION



MISSION BAY



NOE VALLEY



NORTH BEACH



OCEAN VIEW



ORTEGA



PARK



PARKSIDE



PORTOLA



POTRERO



PRESIDIO



RICHMOND



SUNSET



VISITACION VALLEY



WEST PORTAL



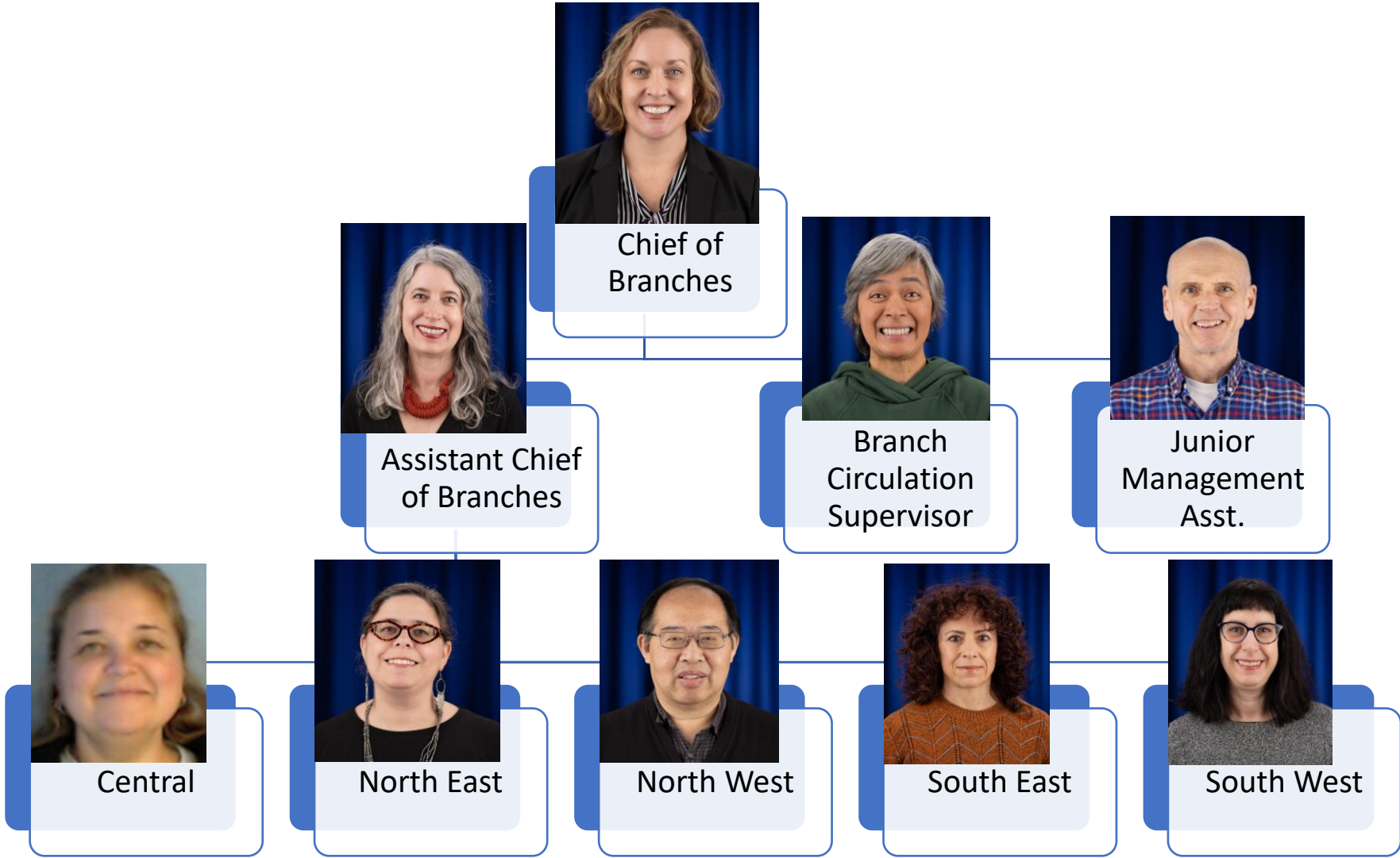
WESTERN ADDITION

Branches Division

Rebecca Alcala-Veraflor
Chief of Branches
April 16, 2026



Chief of Branches Office Team



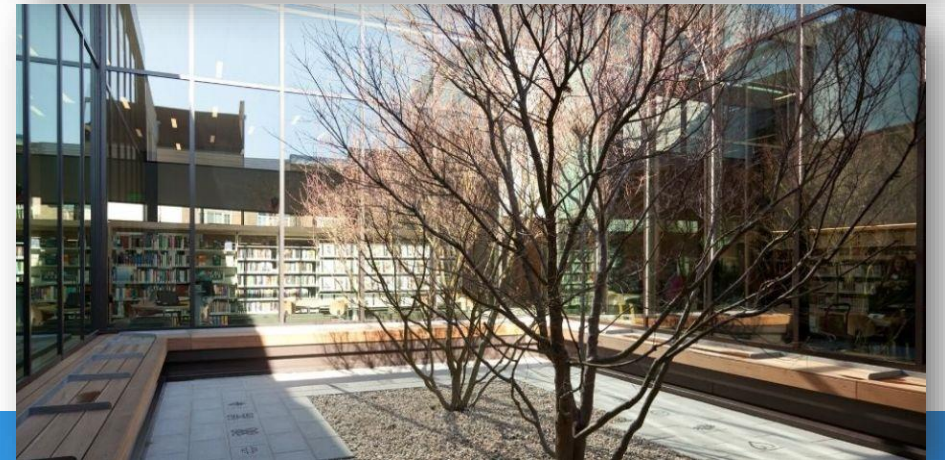
Branch Library Improvement Program (BLIP)

Branch	Established as Library	Remodel
Anza	1932	2011
Bernal Heights	1940	2010
Eureka Valley/ Harvey Milk	1902 McCreery Branch 1961 Eureka Valley	2009
Excelsior	1925	2007
Marina	1954	2007
Merced	1958	2011
Park	1909	2011
Parkside	1951	2010
Potrero	1951	2010
Western Addition	1966	2007
West Portal	1939	2007



BLIP: New & Improved Buildings

Branch	Established as Library	Remodel
Bayview/ Linda Brooks-Burton	1927	2011
Glen Park	1927	2007
Ingleside	1925	2009
Mission Bay	2006	NA
North Beach	1921 (Powell St) 1958 (Mason St)	2014
Ortega	1956	2011
Portola	1927	2009
Visitacion Valley	1934	2011



BLIP: Carnegie Libraries

Branch	Established as Library	Remodel
Golden Gate Valley	1917	2011
Noe Valley/ Sally Brunn	1916	2008
Presidio	1921	2011
Richmond/ Sen Milton Marks	1914	2009
Sunset	1918	2007



Library Improvements for Tomorrow (LIFT)



Branch	Year Established as Library	Progress
Mission	1915	Under Construction
Chinatown/ Him Mark Lai	1921	Accepting Bids
Ocean View	1903	In Planning Phase



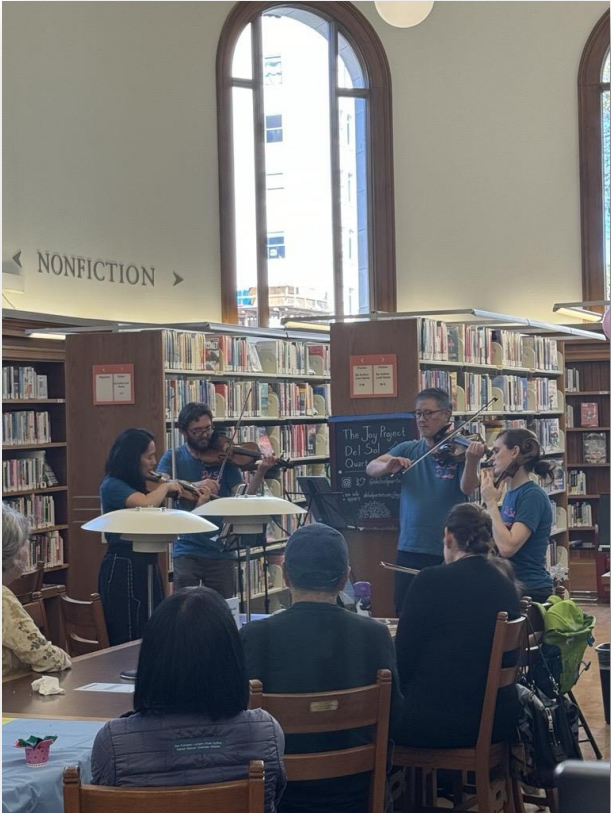
Central District Service Area



Branches	FTE	Hours
Eureka Valley	7.5	55
Mission	15.5	55
Noe Valley/ Sally Brunn	7	50
Park	7.5	50
Potrero	7	50
Western Addition	9	50
Total	53.5	310



North East District Service Area



Branches	FTE	Hours
Chinatown/ Him Mark Lai	18.5	55
Golden Gate Valley	7	50
Marina	8.5	50
Mission Bay	8	50
North Beach	8.5	50
Total	50.5	255



North West District Service Area

Branches	FTE	Hours
Anza	7.5	50
Presidio	6.5	50
Richmond/Sen Milton Marks	17.5	55
Sunset	14	55
Total	45.5	210



South East District Service Area

Branches	FTE	Hours
Bayview/ Linda Brooks-Burton	8.5	55
Bernal Heights	9.5	50
Excelsior	13	55
Glen Park	8	50
Portola	8.5	50
Visitacion Valley	7.5	55
Total	55	315



South West District Service Area

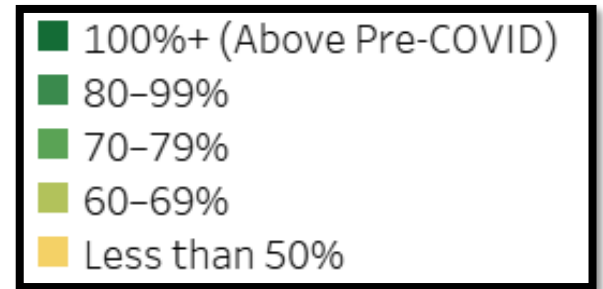
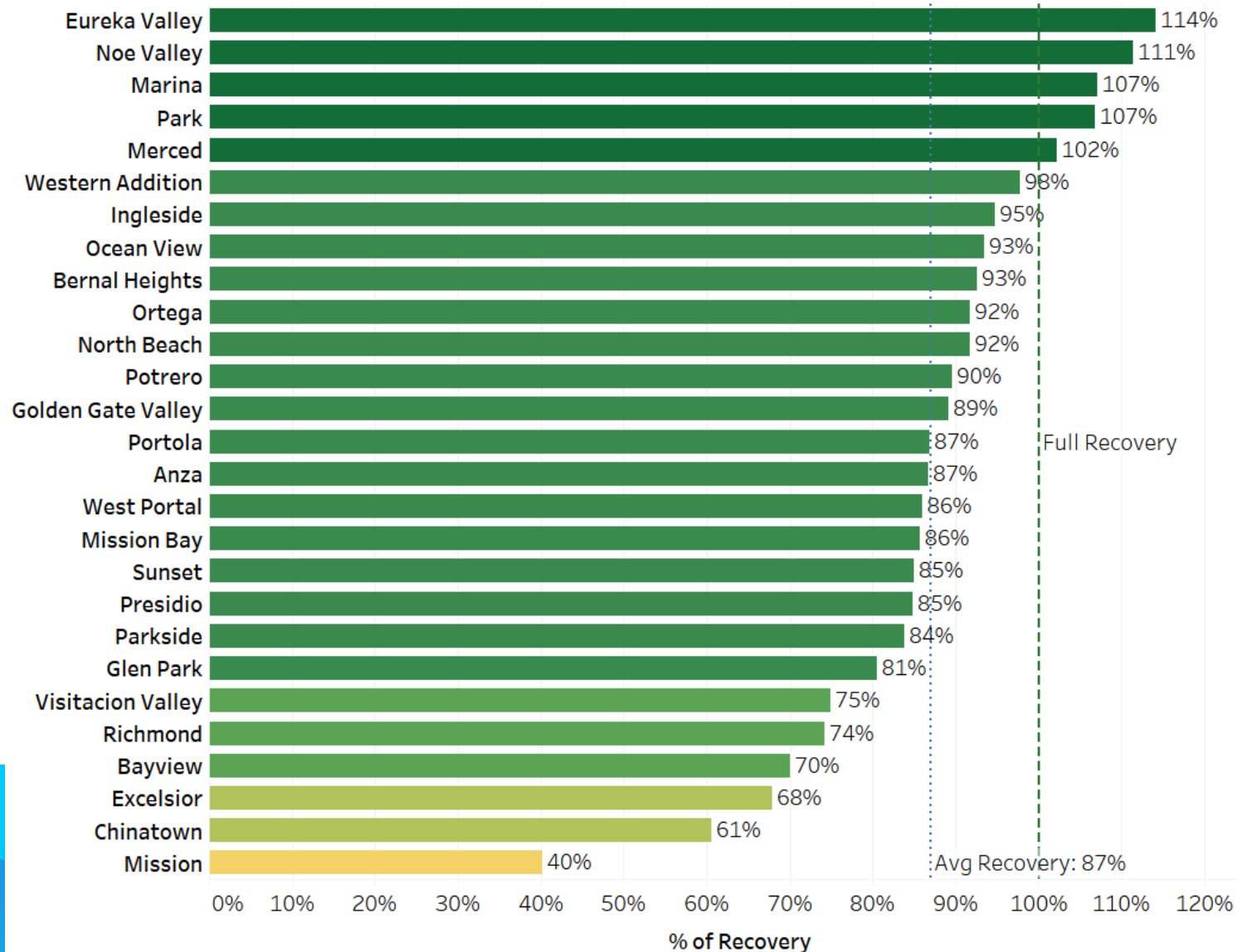
Branches	FTE	Hours
Ingleside	8	50
Merced	9.5	55
Ocean View	6	50
Ortega	12.5	50
Parkside	9	50
West Portal	13	55
Total	58	310



SFPL Visits Recovery

Mar 2019 – Feb 2020 | Mar 2025 – Feb 2026

Visits at 87% of pre-COVID levels;
5 branches fully recovered or above



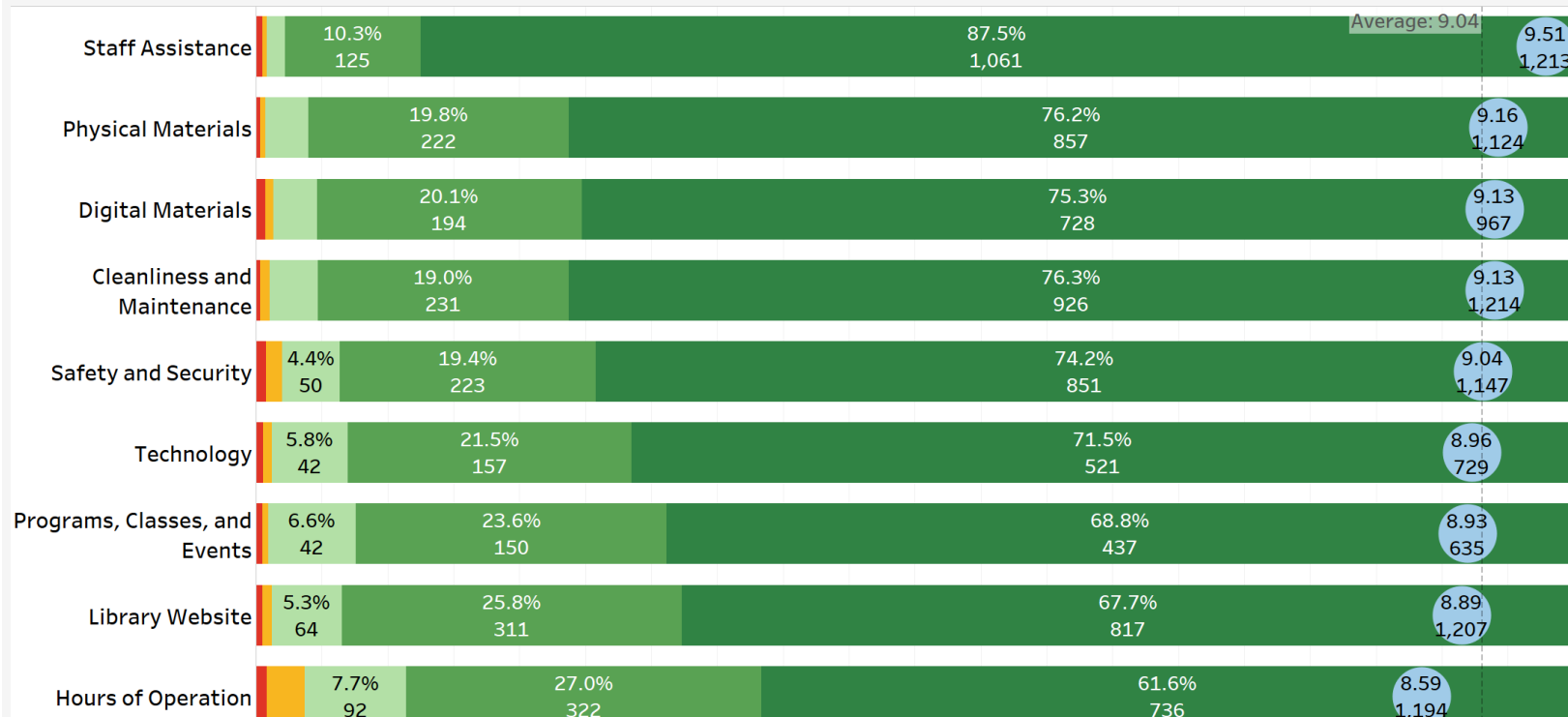
SFPL Patron Satisfaction

Satisfaction with SFPL Services

Responses to the question: "Please rate your satisfaction with the following SFPL services."

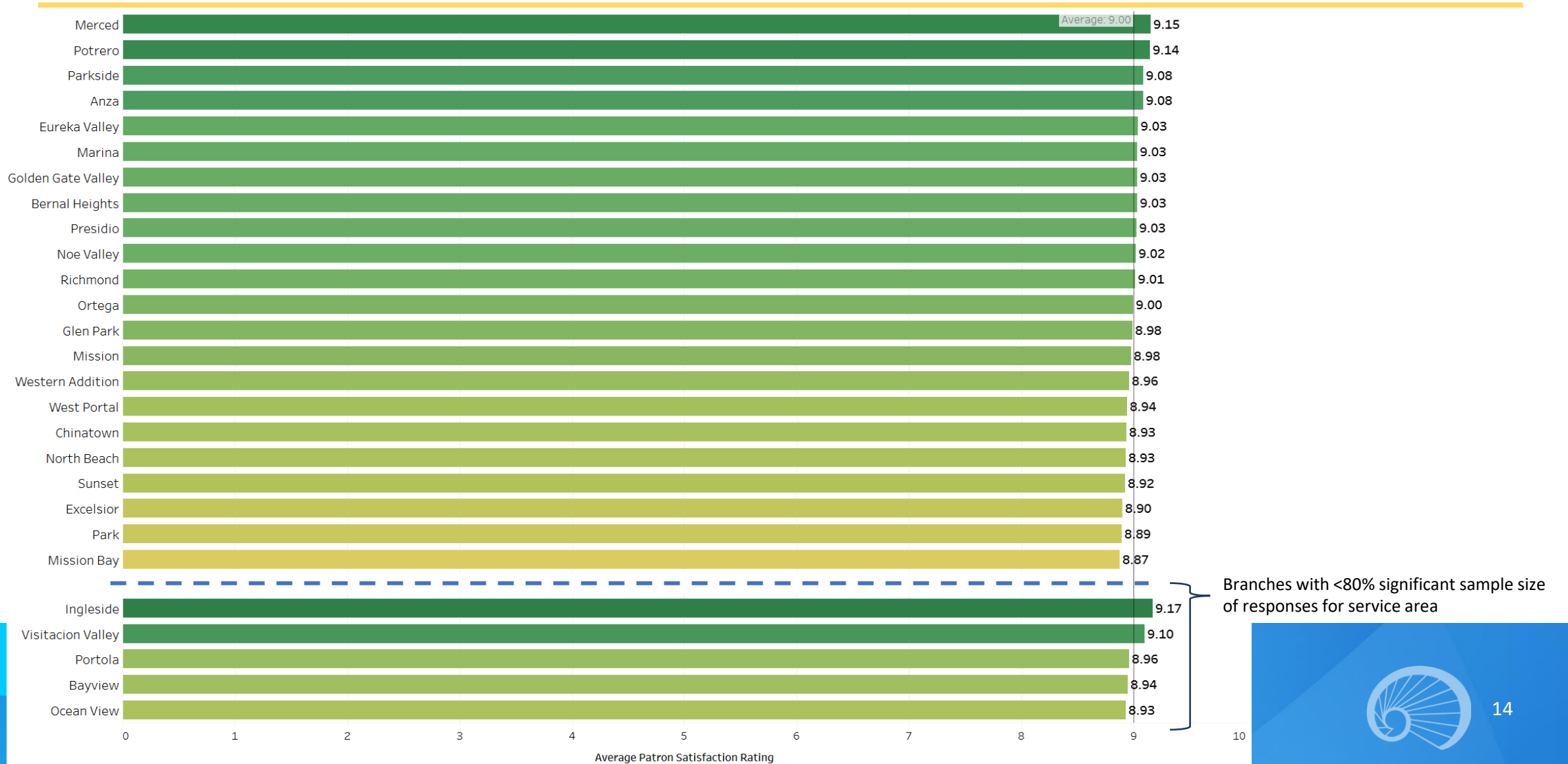
December 2025 through February 2026

- Excellent
- Satisfactory
- Neutral
- Unsatisfactory
- Poor



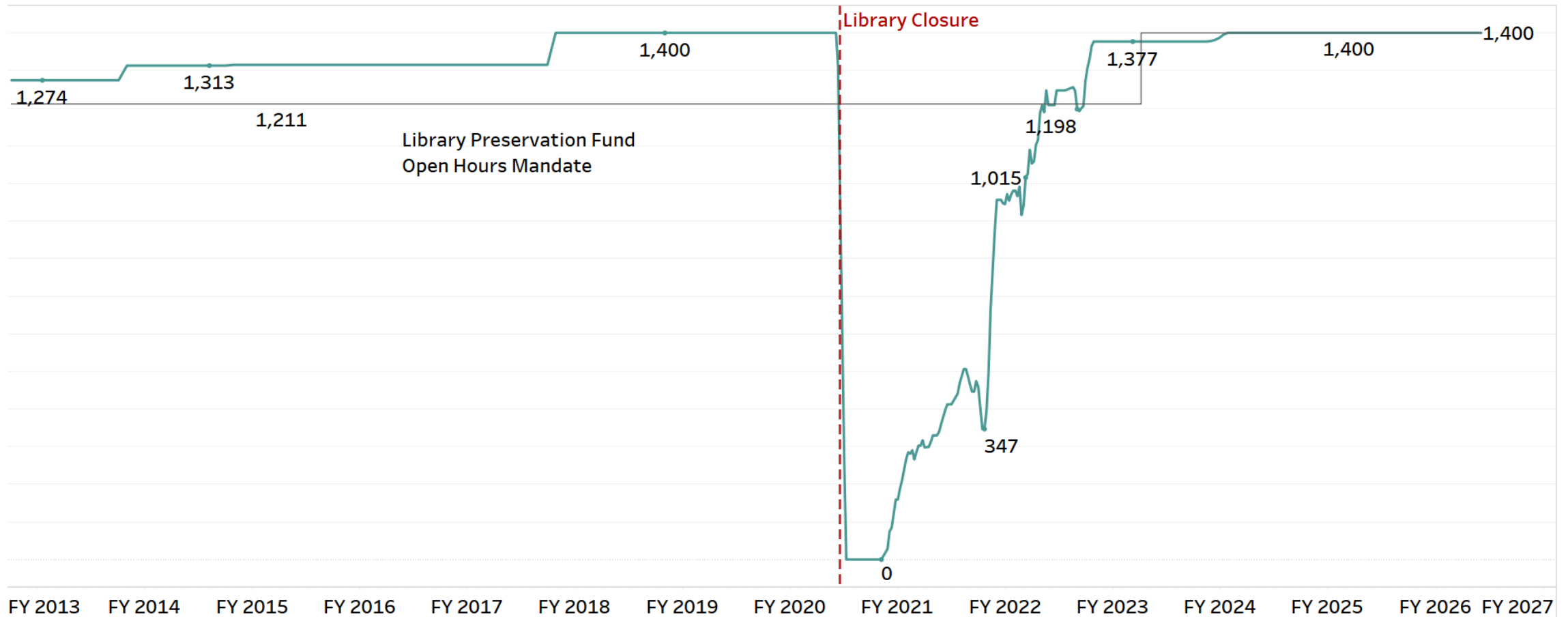
Patron Satisfaction by Branch

Patron Satisfaction Averages 9.0 out of 10
Across All Branches



SFPL Branch Libraries Weekly Hours of Operation | FY13-FY26

Excludes Main Library



Council of Neighborhood Libraries

- ❖ Promote public awareness about the library system and its services
- ❖ Identify and champion branch needs and working to resolve issues
- ❖ Act as a conduit for neighborhood input



Community Catalyzers



Branch Managers 2026 Excellence Award | Community Catalyzer



Thank You!

