

SFPL Capital Projects

John Cunha
Facilities Director

Prepared by
Lisa Valerio
Capital Projects Manager

May 21, 2026
San Francisco Library Commission

5



Project Updates

Completed Projects

- Main - Safety Barriers
- Park Branch - Library Waterproofing

Small Capital Projects

- Main - Roof
- Main - Seismic Moat Replacement

Large Capital Projects

- Mission Branch - Library Renovation
- Chinatown Branch - Library Renovation
 - Chinatown Temporary Site
- Ocean View Branch



COMPLETED: Main & Park Branch



Main Safety Barriers

- **Est. Budget:** \$4.0M
 - **Scope:** Enhance safety
- Substantial Completion**



Park Branch Waterproofing

- **Est. Budget:** \$1.5M
 - **Scope:** Protect the building exterior and interior
- Substantial Completion**



UPCOMING: Main Library Roof and Moat



Roof

- **Est. Budget:** \$6.1M
 - Includes \$3.1M Building Forward Grant
- **Scope:** Replace Roof
- **Schedule:** Start –Summer 2026

Moat

- **Est. Budget:** \$7.3M
 - Includes \$3.2M Building Forward Grant
- **Scope:** Replace deteriorating system
- **Schedule:** TBD



CURRENT: Mission Branch Library Renovation

Est. Budget: \$40.7M (May 2026)

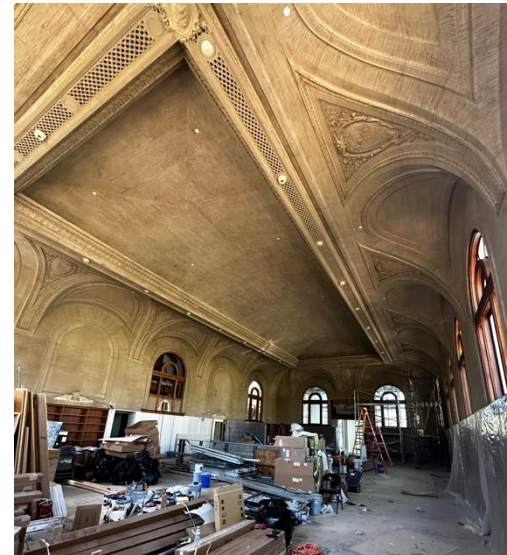
- Includes \$5.3M of Building Forward Grant

Schedule:

- Substantial Completion – August 2026
- Final Completion – October 2026

Project Progress:

- 88% construction completion
- Shelving and Furniture procurement completed
- Collection Programming and Preparation



CURRENT: Chinatown Branch Library Renovation

Est. Budget: \$47.8M (March 2026)

- Building Forward Grant- \$7.9M

In Progress:

- Panel Review and Bid Pricing Phase
- Bid Award – Late June 2025

Schedule:

- Est. Start – Late Summer 2026
- Est. Completion – Late Summer 2028



Chinatown Temporary Library

Location:

- 950 Grant Street

Specifications:

- 4,200 square feet

Schedule:

- Opening late Summer 2026

Status:

- Use of space for pop-up programs
- Furniture installation



UPCOMING: Ocean View Branch Library

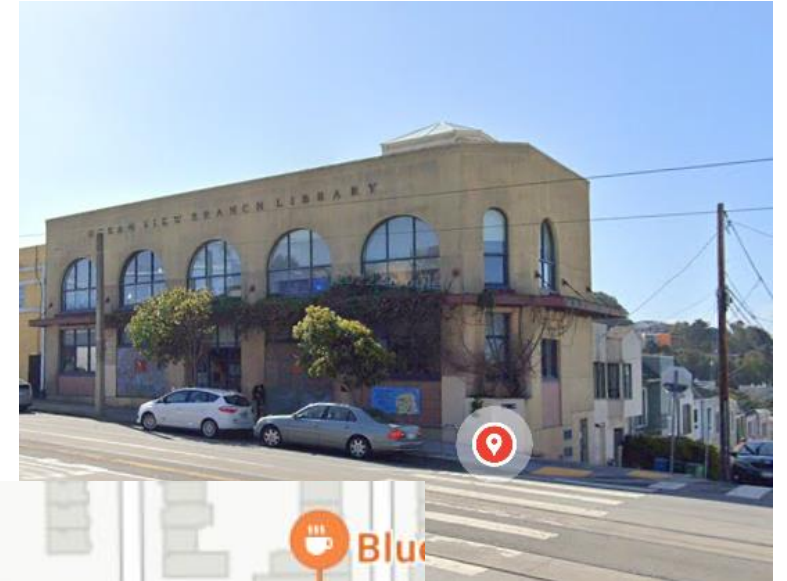
Goal: New Ocean View Branch Library

Project and Site Evaluation/Investigation

- Up to 20,000 SF
- \$61M-\$81M 2025 Estimate Range

Evaluating Opportunities

- Engagement with Real Estate and Public Works
- Nearby properties -
 - 400 Randolph
 - 333 Randolph



Systemwide Facility Stewardship

Proactive Care. Reliable Service. Stronger Libraries.



Introducing Brian Haug

Chief Stationary Engineer

SFPL is implementing a proactive and preventative approach to building maintenance and infrastructure stewardship across our library system.



A Shift from Reactive to Preventative

Historically, many building systems were addressed reactively after failure. We are building a long-term maintenance framework to keep our facilities safe, reliable, and welcoming.



Ongoing Maintenance Focus Areas



Interior & Exterior Painting



Roofing Systems



Flooring



Infrastructure & Mechanical Equipment



Benefits for Our Communities

✓ Improved reliability and customer experience

✓ Fewer emergency disruptions and service interruptions

✓ Extended life of facilities and assets

✓ Support for smaller, more frequent facility refreshes



Caring for Today. Preparing for Tomorrow.





Thank you.

