

RESUMPTION OF LIMITED LIBRARY SERVICE: SFPL TO GO

SFPL To Go

Limited Library Service

BOOK PICK UP
AVAILABLE

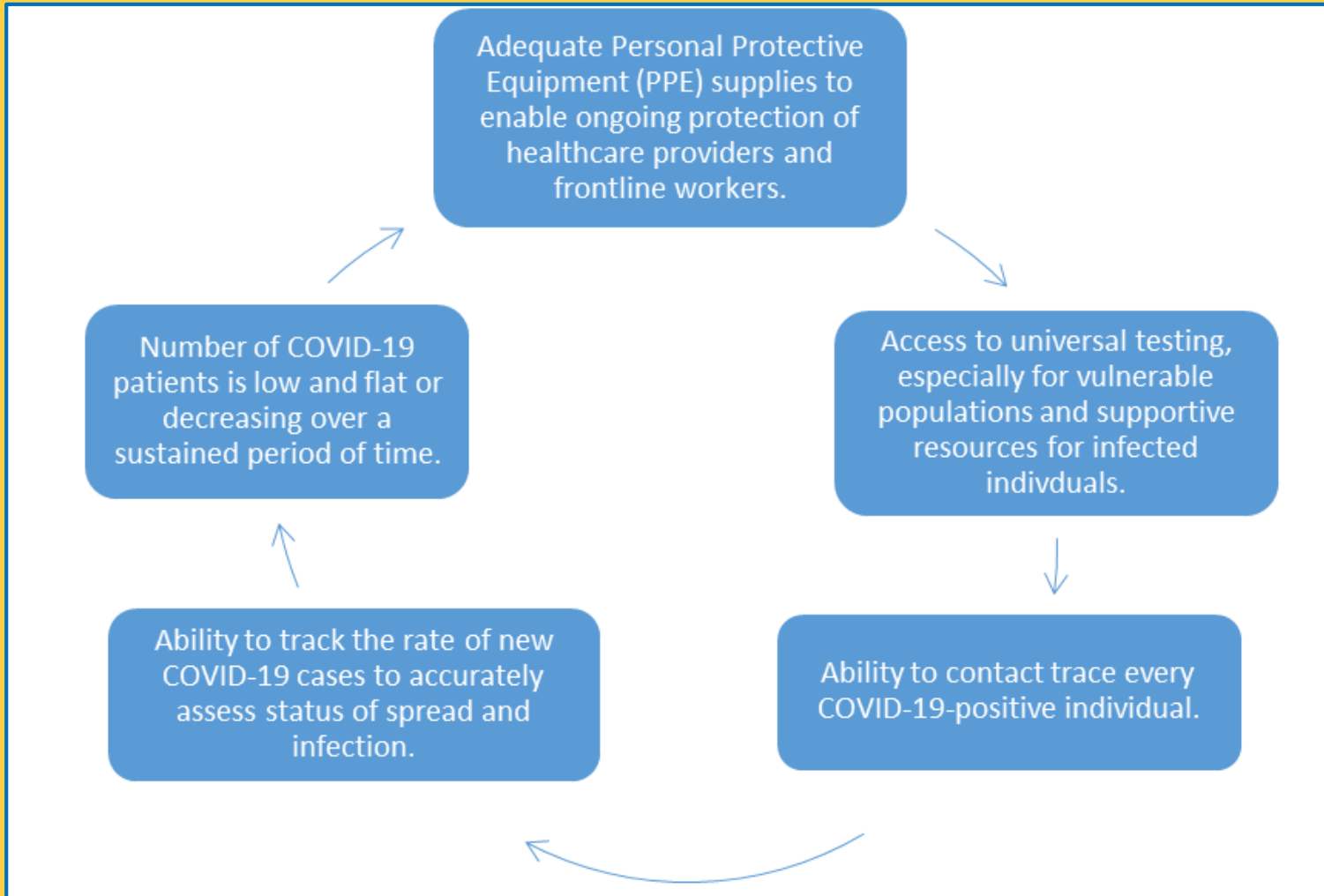
預訂接客

Recogida de libros
disponible



San Francisco Public Library

San Francisco
Library Commission
July 9, 2020



SF Dept. of Public Health Progress Indicators

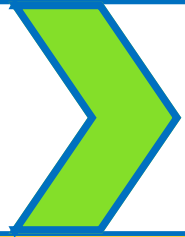
Phases for Restoration of Library Services





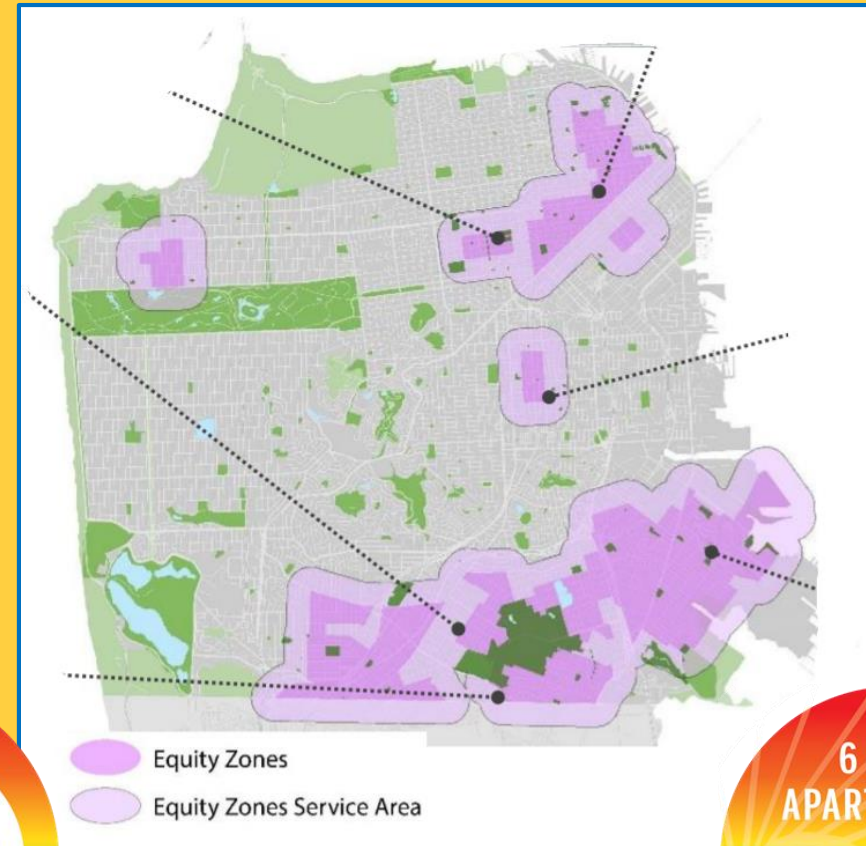
Preparation for Phased Reopening

- Selected Main and Branches prepare for contact-free holds pickup
- Work spaces set up in accordance with local and OSHA guidance for individual distancing.
- Sufficient staffing is available to meet public service needs while ensuring staff safety and social distancing.



Contact-Free Service Determining Branch Locations

- Up to 13 neighborhood branches
- Citywide equity zones
- Geographic distribution
- Physical layout of locations



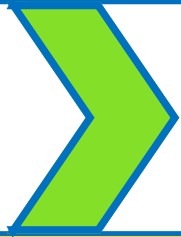
6 FEET
APART PLEASE

請保持
6呎身距



6 FEET
APART PLEASE

DISTANCIA DE
6 PIES POR
FAVOR



Contact-Free Service

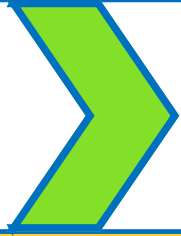
Main Library

- Holds pickup service at Larkin Street entrance
- 7 days per week
 - *Monday-Saturday 10:00a-5:30p*
 - *Sunday 12:00-5:30p*
- Materials return available

Branch Libraries

- Holds pickup service at front door of up to 13 branches
- Tuesday-Saturday / 10:00a-5:30p
- Materials return available at holds pickup library locations
- All other branches remain closed to staff and public

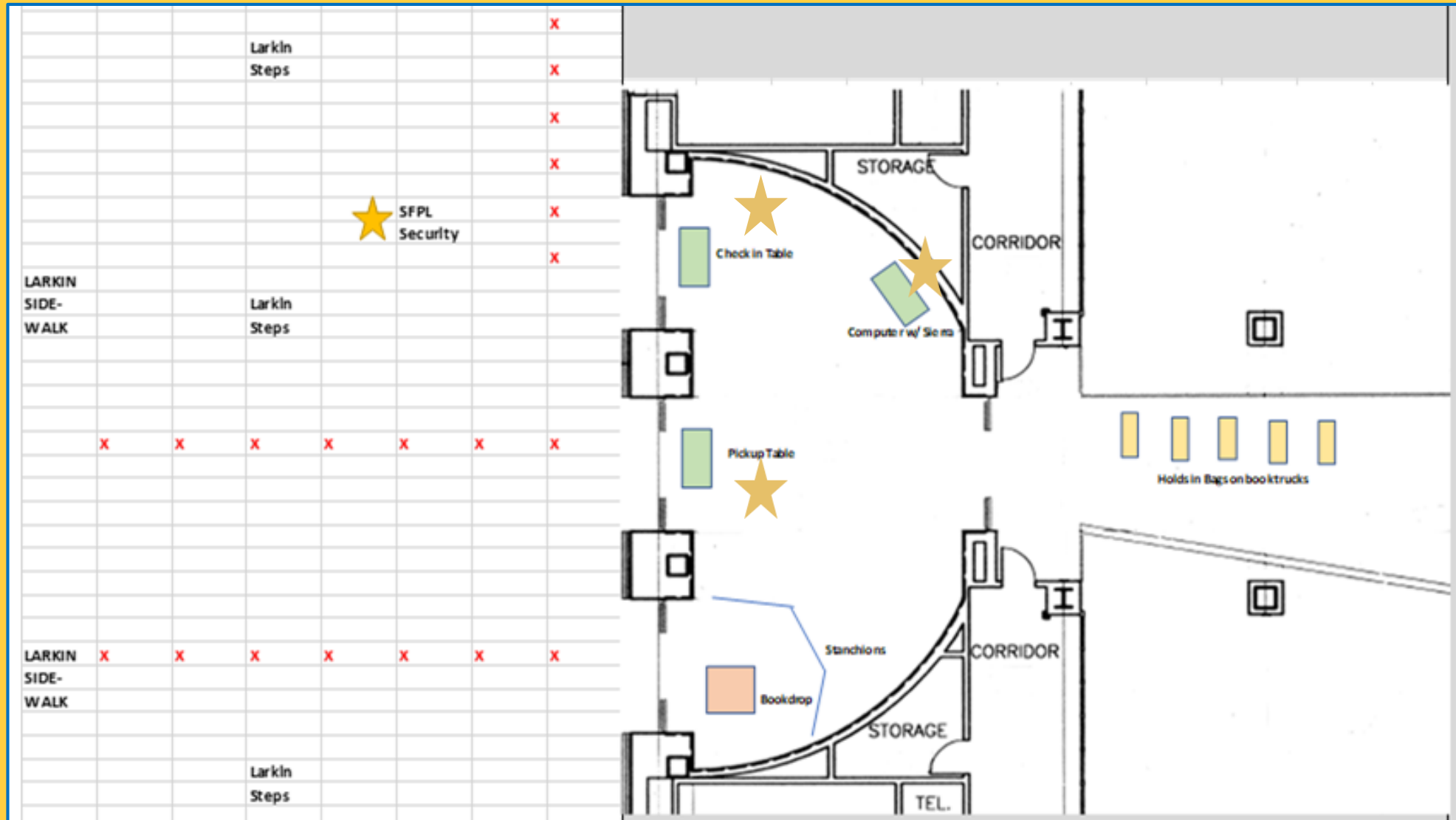




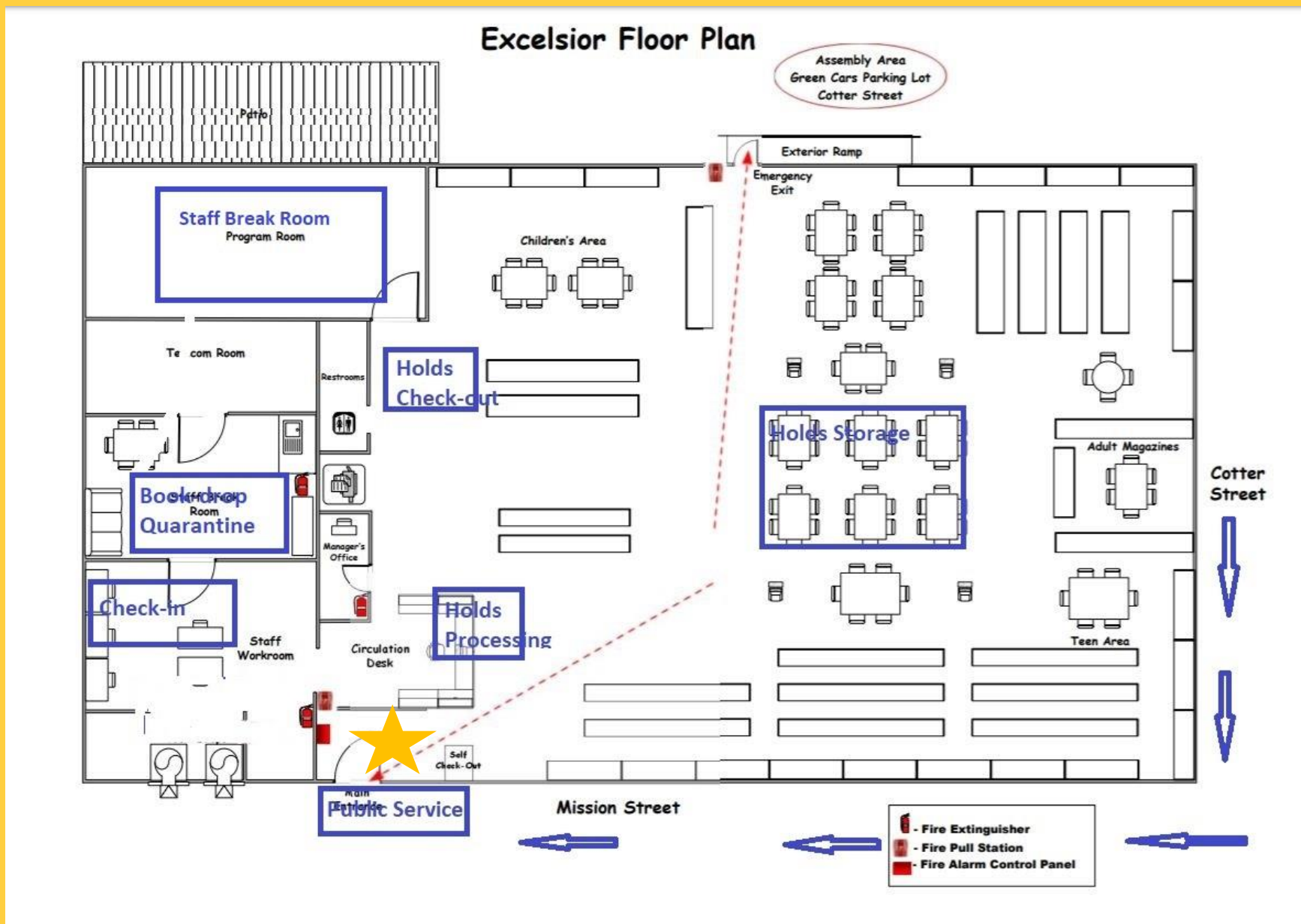
Contact-Free Service Details

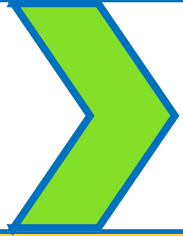
- Patrons must request materials ahead of time via phone, email or online
- Requested materials are delivered from other open SFPL locations
- Patrons can get assistance from library staff via the Telephone Information Program
- Pick-up locations are ADA accessible service points at library entrances
- Only walk-up service is available
- Materials are pre-checked out to patrons and bagged for pick up
- Patrons are notified of item pickup availability
- Book drops and bins are available for patrons to safely return materials
- Returned materials are isolated for 72 hours per SFPL's Materials Handling Guidelines

Example: Main Library Larkin Street Contact-Free Holds Pickup Map



Example: Excelsior Branch Contact-Free Holds Pickup Map





Safety for Patrons & Staff

Staff Safety Guidelines

- Staff required to complete daily health certification before entering library
- On-site custodian at each open location
- Minimal staff handling of materials (one staff completes each request)
- Gloves and facial coverings required
- Frequent handwashing



Patron Safety Guidelines

- Facial coverings required
- Only walk-up, contact-free front door service available
- Hand sanitizer available at door
- All materials pre-checked out and pre-packed in paper bags



Scientific Research

Realm (Reopening Archives, Libraries and Museums) Study

**Commissioned by Institute of Museum and Library Services and OCLC
(global library cooperative)**

Virus was not detectable on the materials after 72 hours of quarantine.

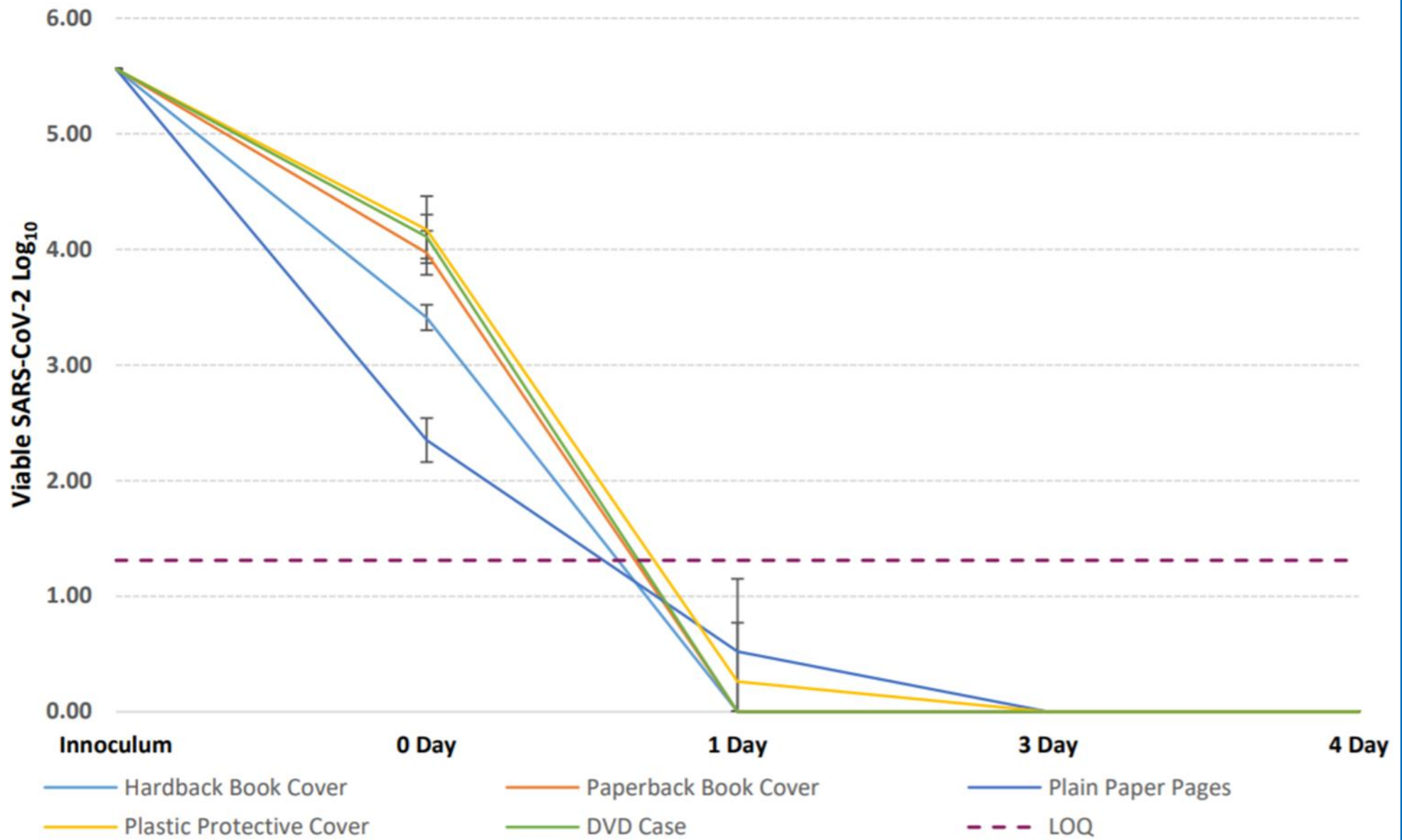


Figure 3. Natural attenuation of SARS-CoV-2 at days 1, 3, and 4 during test 1.2.

SFPL Reopening Committee

Rebecca
Alcala-
Veraflor

Terry Carlson

Shellie
Cocking

Catherine
Delneo

Tom Fortin

Ayaan Gates-
Williams

Regan Gong

Michele
Hampton

Michelle
Jeffers

Ruben
Juarez

Doriene
Kilzer-Hill

Nzugu
Kitenge

Ofelia Moran

Katrin
Reimuller

Denise
Schmidt

Anne
Vannucchi

Nadia Volny

Barbara
Warden

**IT'S FABULOUS
TO SEE YOU**



BOOK PICK-UP AVAILABLE

提取已預訂書籍

Entrega de libros disponible



sfpl.org