

SFPL Public Services Midyear Progress Update



San Francisco Public
Library Commission
Meeting

March 17, 2022

BOOK PICK-UP

提取已預 訂書籍

Entrega de libros



Background

- Two years since SFPL closed its doors on March 13, 2020
- SFPL launches SFPL To Go – contact free service model on August 10, 2020
- SFPL launches Browse & Bounce – Limited Library Service on May 3, 2021
- All branches resume in-person services in August 2021
- Main Library resumes pre-COVID hours of operation on September 7, 2021
- Seven-day service restored at 20 of 28 neighborhood libraries January 8, 2021

Every Library Everyday Target

- Golden Gate Valley – April 16
- Portola – April 16
- Excelsior – May 28
- Noe Valley – May 28
- Visitacion Valley – May 28
- Glen Park – June 25
- Ingleside – June 25



April 16, 2022



Golden Gate Valley



Portola

May 28, 2022



Excelsior



Noe Valley



Visitacion Valley

June 25, 2022



Glen Park



Ingleside

Mission Branch



SFPL to Go Service Hours

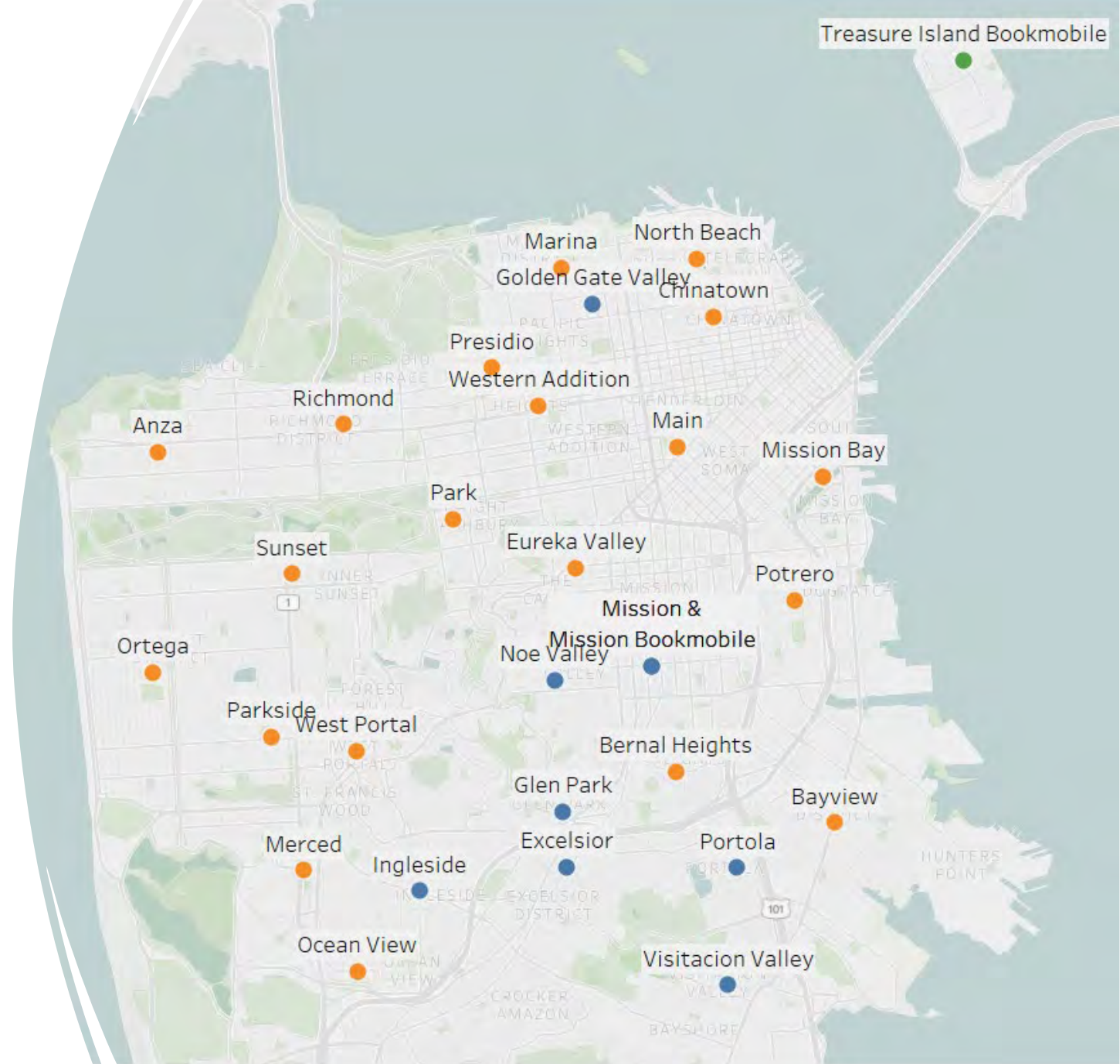
Tuesday - Saturday 10am-5:30 pm

Bookmobile Browsing Service Hours

Tuesday, Thursday, Friday, & Saturday 12-5:30pm

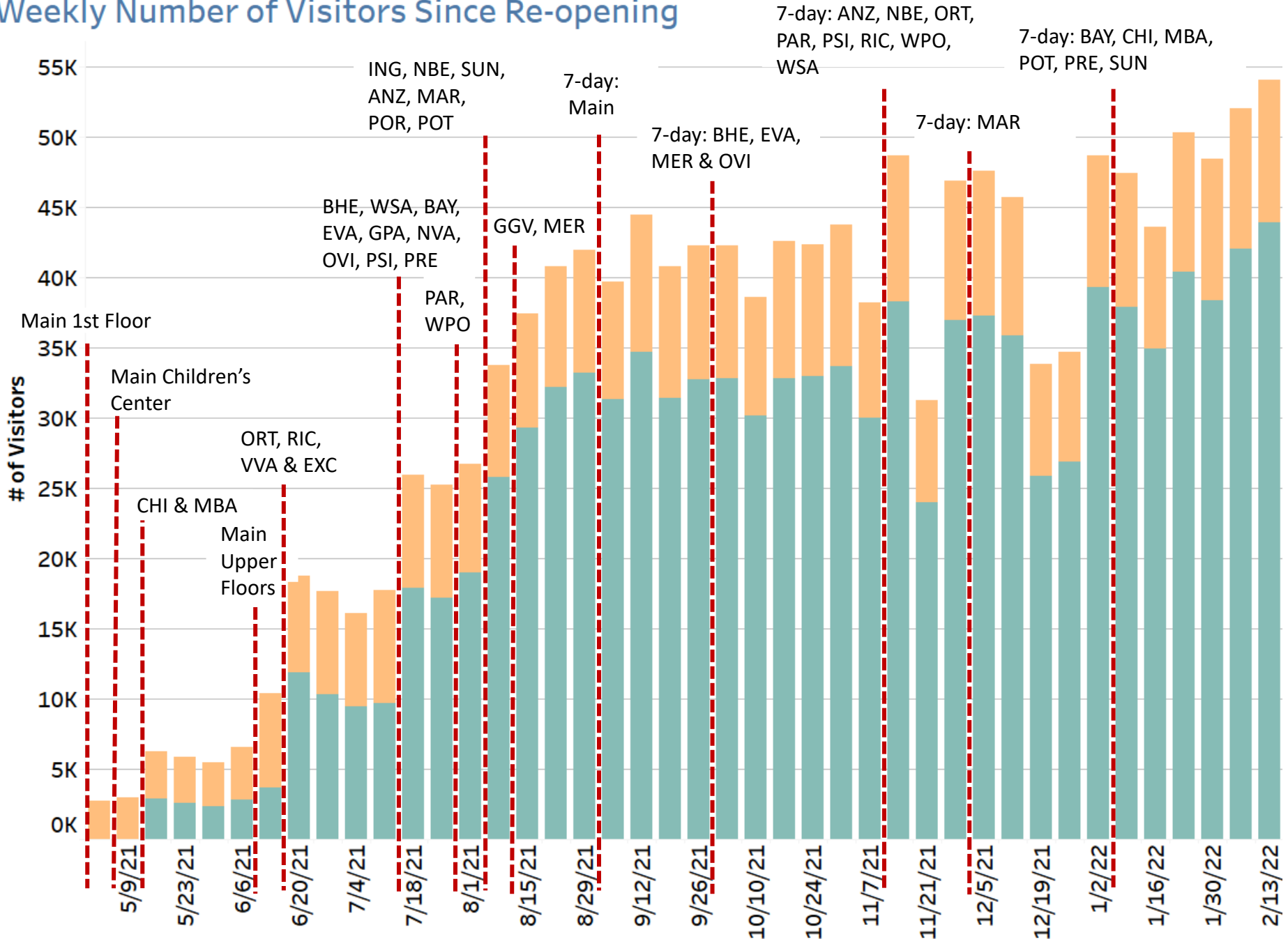
Service Map

- Locations with 7-day service
- Locations with 5-day service
- Bookmobile service locations



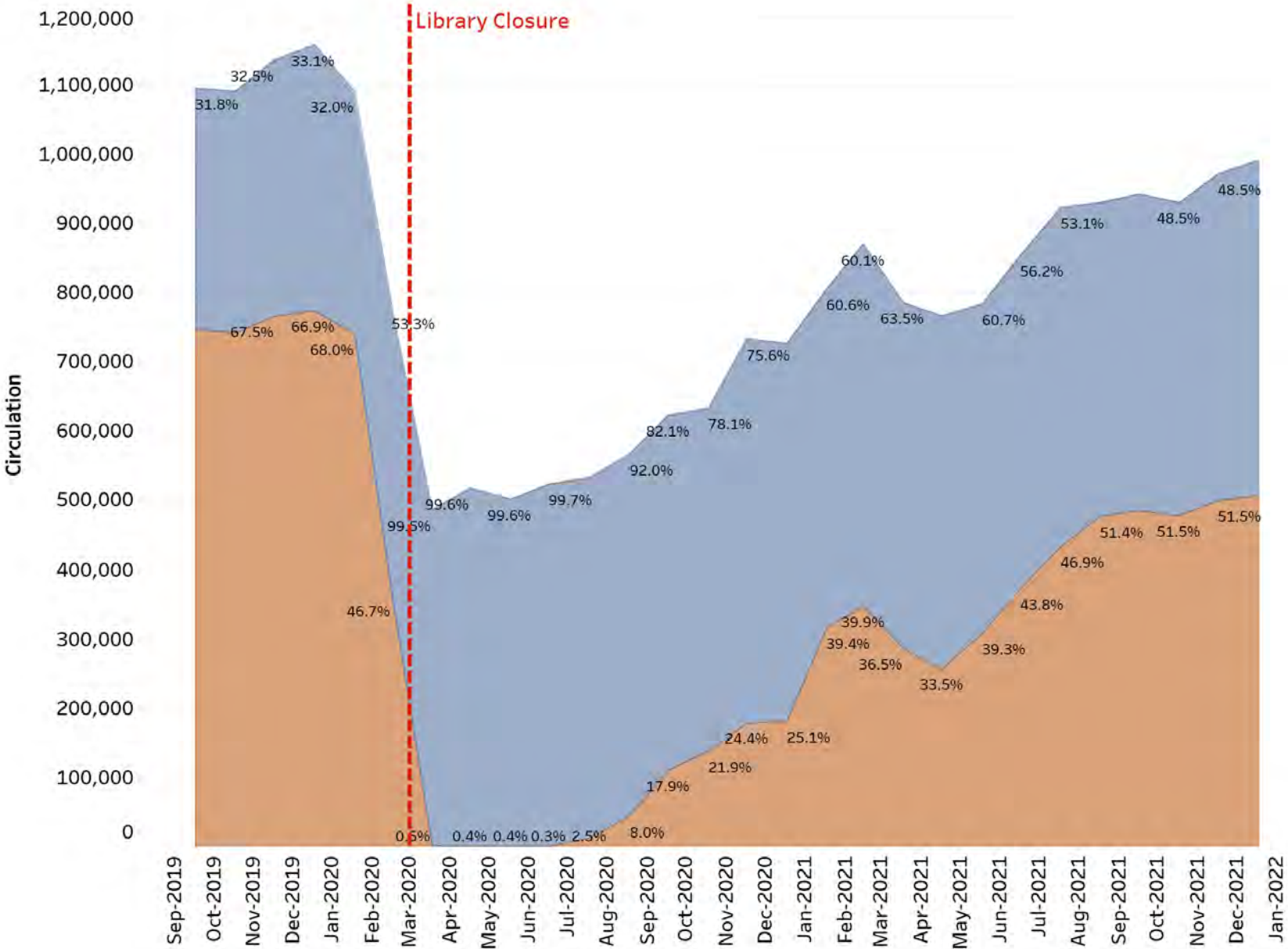
Weekly Number of Visitors Since Re-opening

■ Main
■ Branches



Monthly Number of Items Circulated

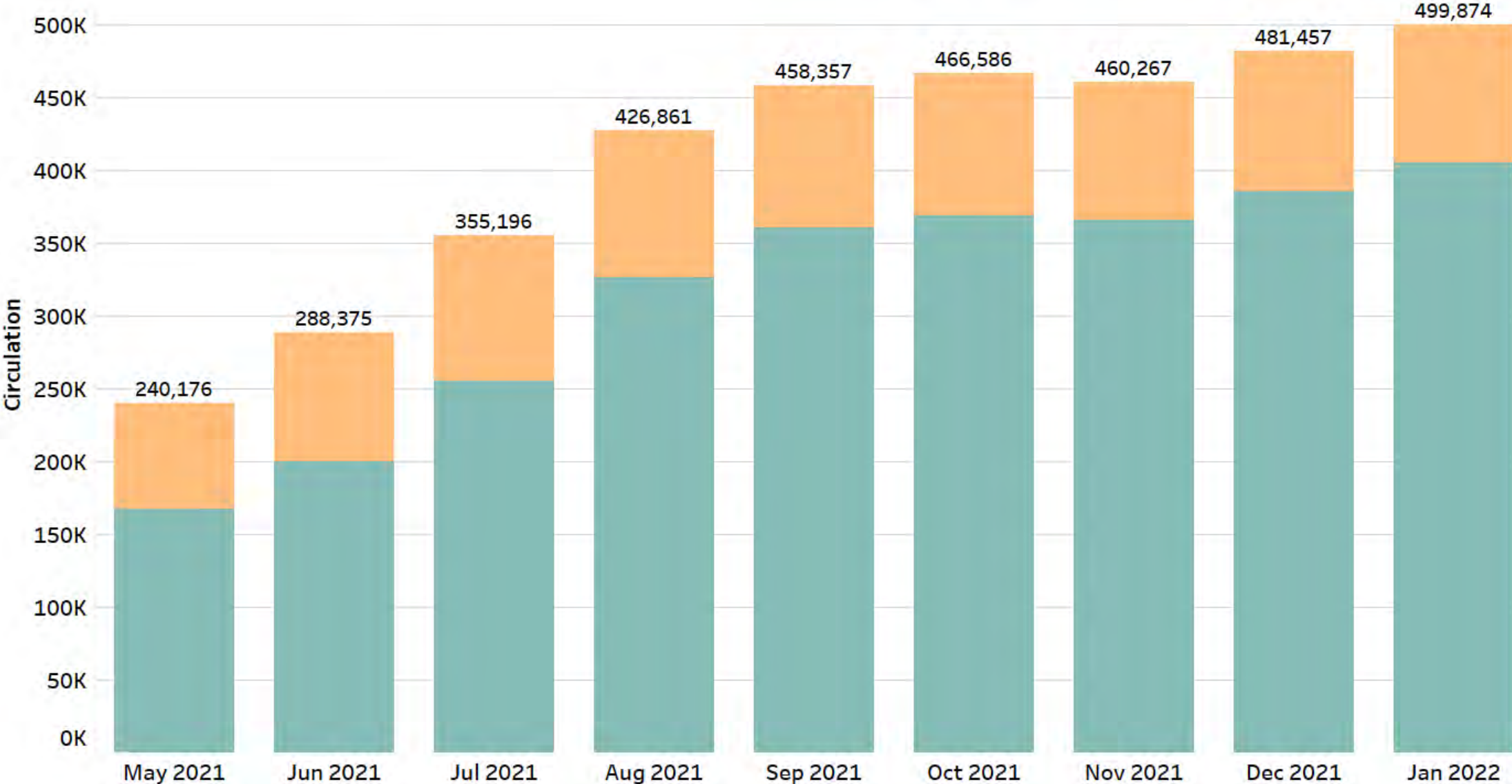
eMaterial Circ Physical Circ



Monthly Number of Physical Items Circulated

(May to August 2021 include SFPL-to-Go circulation)

- Main
- Branches



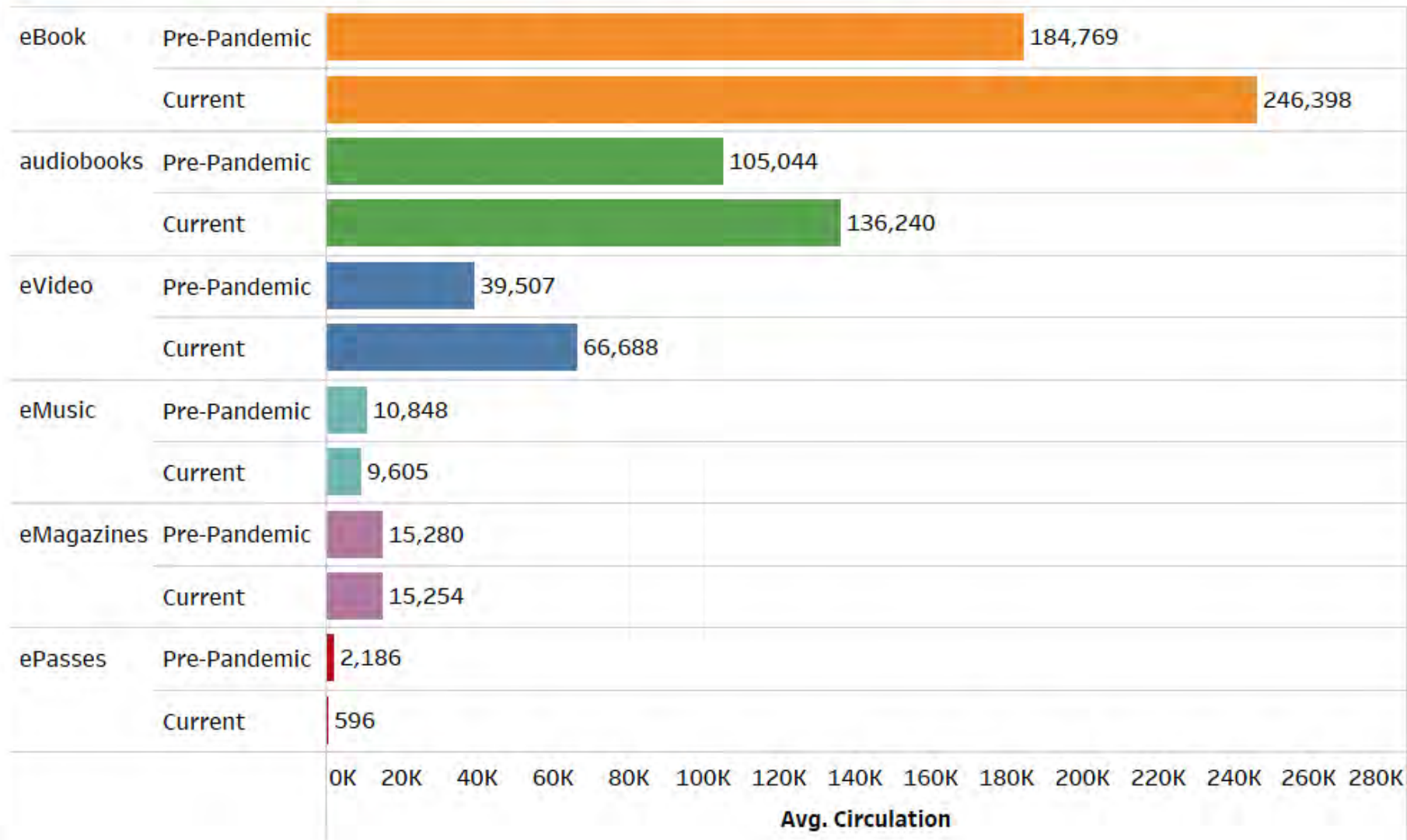
e-Resource Circulation

Average Monthly Comparison By Type: Pre-Covid vs Current

May 2019-January 2020 vs May 2021-January 2022

Type

eBook audiobooks eVideo eMusic eMagazines ePasses



Percentage Change

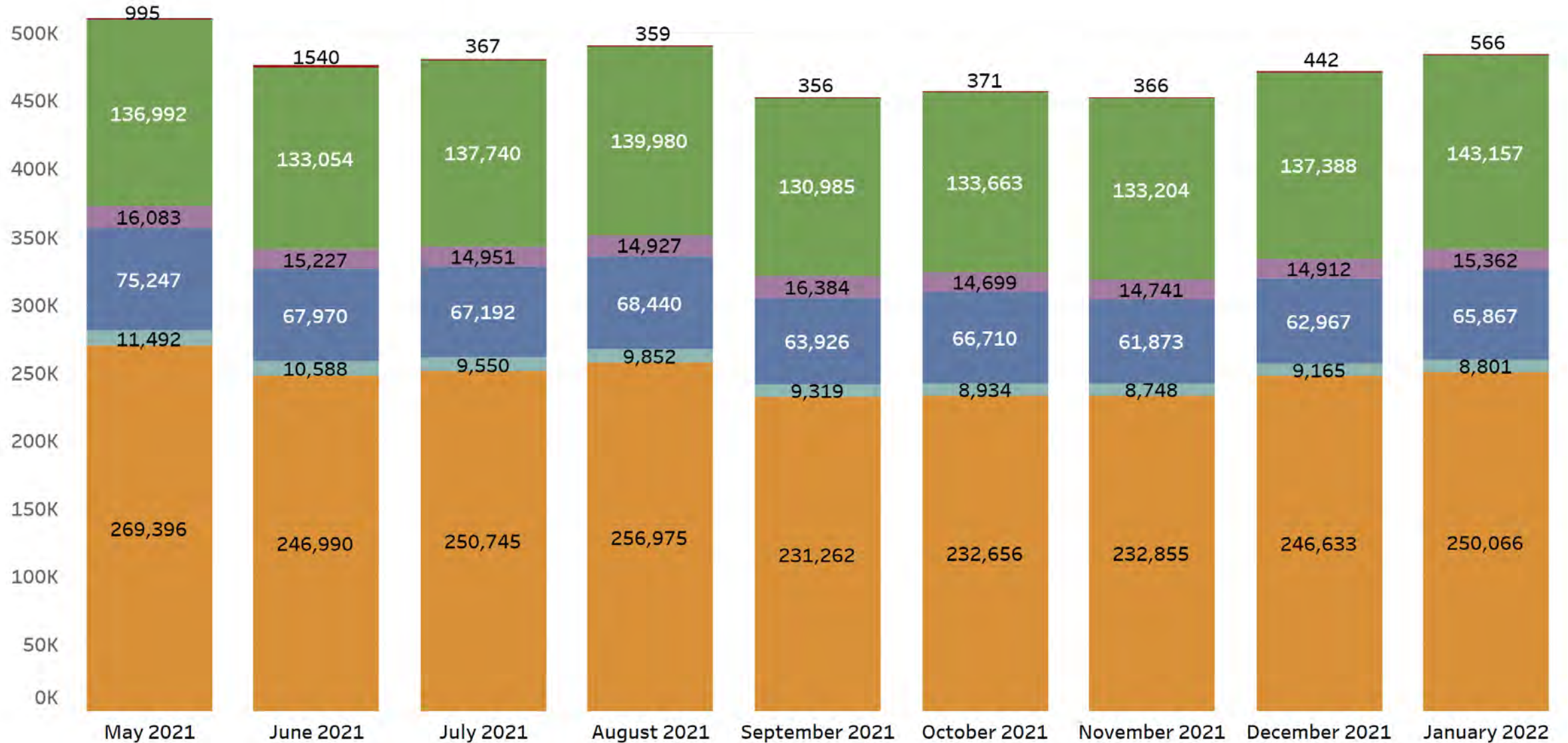
	Current
eBook	33.4%
audiobooks	29.7%
eVideo	68.8%
eMusic	-11.5%
eMagazines	-0.2%
ePasses	-72.7%

e-Resource Circulation

By Type: May 2021 - January 2022

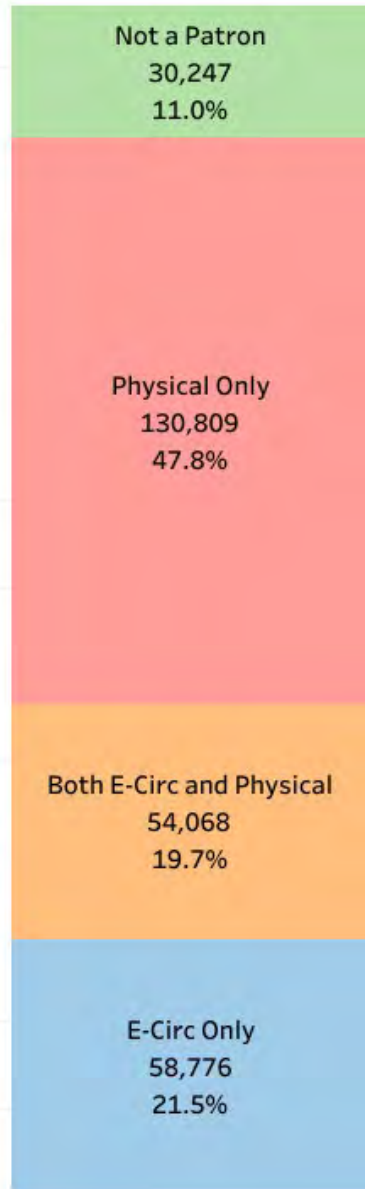
Type

ePasses audiobooks eMagazines eVideo eMusic eBook

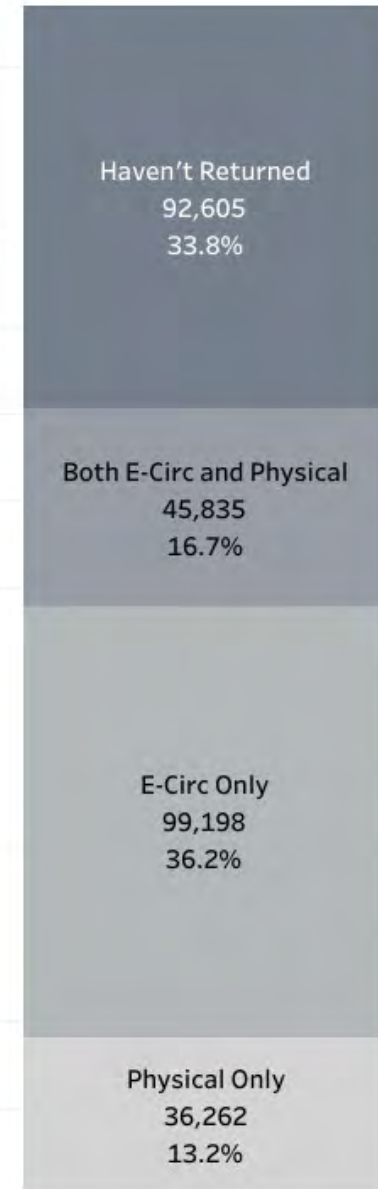


Patron Recovery Flows

Pre-COVID



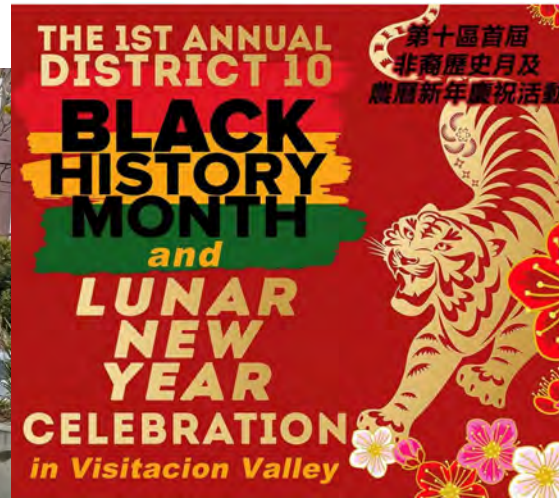
Patron Recovery





Cultural & Community Programming

D10 Black History Month & Lunar New Year Celebration





San Francisco is celebrating...

POKÉMON



DAY

SUNDAY, FEBRUARY 27, 2022
1:30PM TO 4:30PM

 **Richmond Branch Library**
 351 9th Avenue

 **Parkside Branch Library**
 1200 Taraval Street

Celebrate National Pokemon Day with the San Francisco Public Library, District 1 Supervisor Connie Chan, District 4 Supervisor Gordon Mar, the Official Pokemon Go Bay Area Region, and the SF PoGO Raids Meetup Discord. Activities will include button making, Pokemon related book giveaways, photo opportunities, Pokemon trading card game activities, and Pokemon Go activities!



In-Person Digital Literacy Programs



Literacy Programs	In Person Attendance	Live Online Attendance	Views online @ 30 days
Digital Skills	557	1,001	596
Tutor Trainings	46	79	

Bookmobile Service



Bookmobile Service	Number of Stops	Patron On Board Visits	Storytime Attendance	Book Deposits
Swing Into Stories	8	525	318	
Library on Wheels	73	642		
Special Events	5	2,044		
Book Deposit Stops	21			115

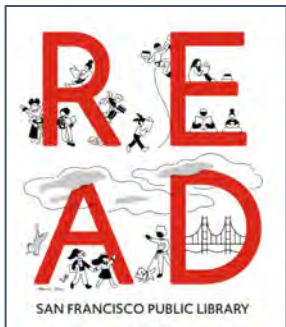
Programming Metrics

Programs for Children	Youth Programs FY 22 Mid Year Total	Storytimes	Class Visit Attendance
# of Programs	719	89	
Live Attendance	10,106	324	5,207
On Demand (views @ 30 days)	13,487	1,692	

Programs & Classes for Adults	FY 22 Mid Year Total
# of Programs	524
Online Attendance	14,262
In person Attendance	3,078
On Demand (online views @ 30 days)	15,191

Programming on the Horizon

- Restoration of Storytimes
- Dia de los Niño's/Dia de los Libros
- Tech Week
- Summer Stride



Exhibits

July - January

- Exhibits that were installed before July 2021 and remained on display into FY22: 4
- Exhibits installed in FY22: 17



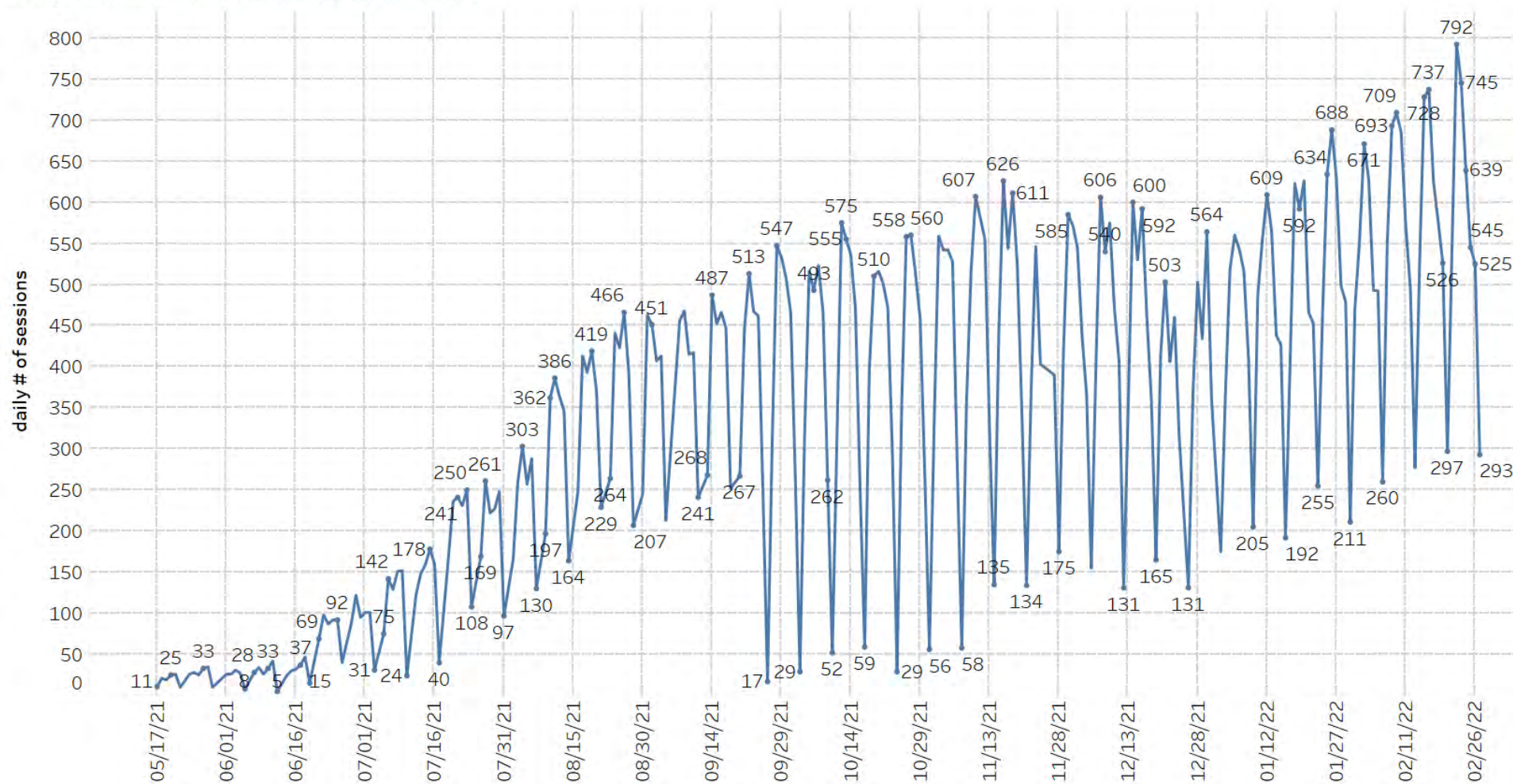
Meeting Room Utilization

Community Meeting Room Usage	FY 22 Mid Year
Branches	49
Main Library	25



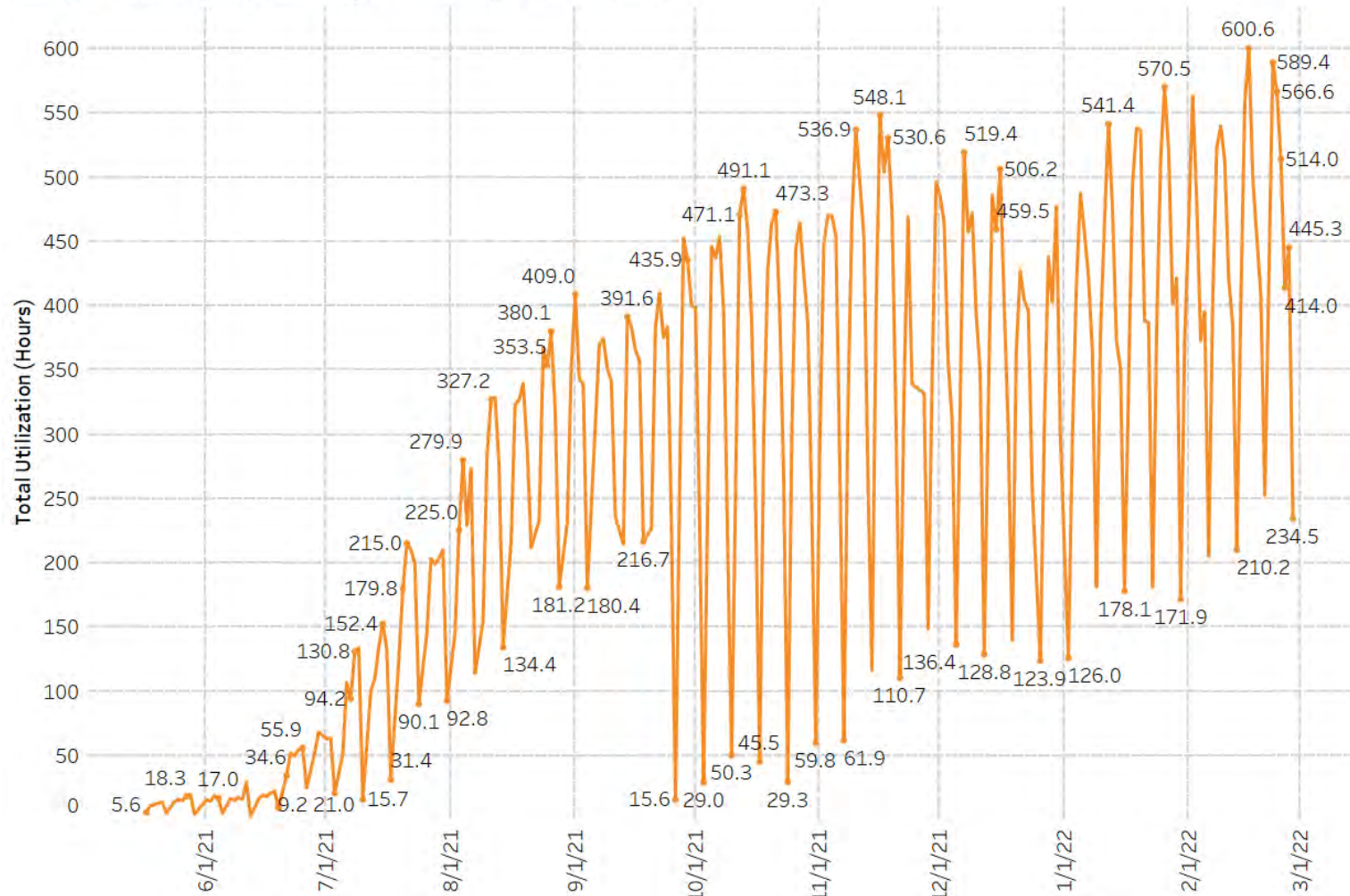
Public Access Computing

Daily Number of Sessions - Branches



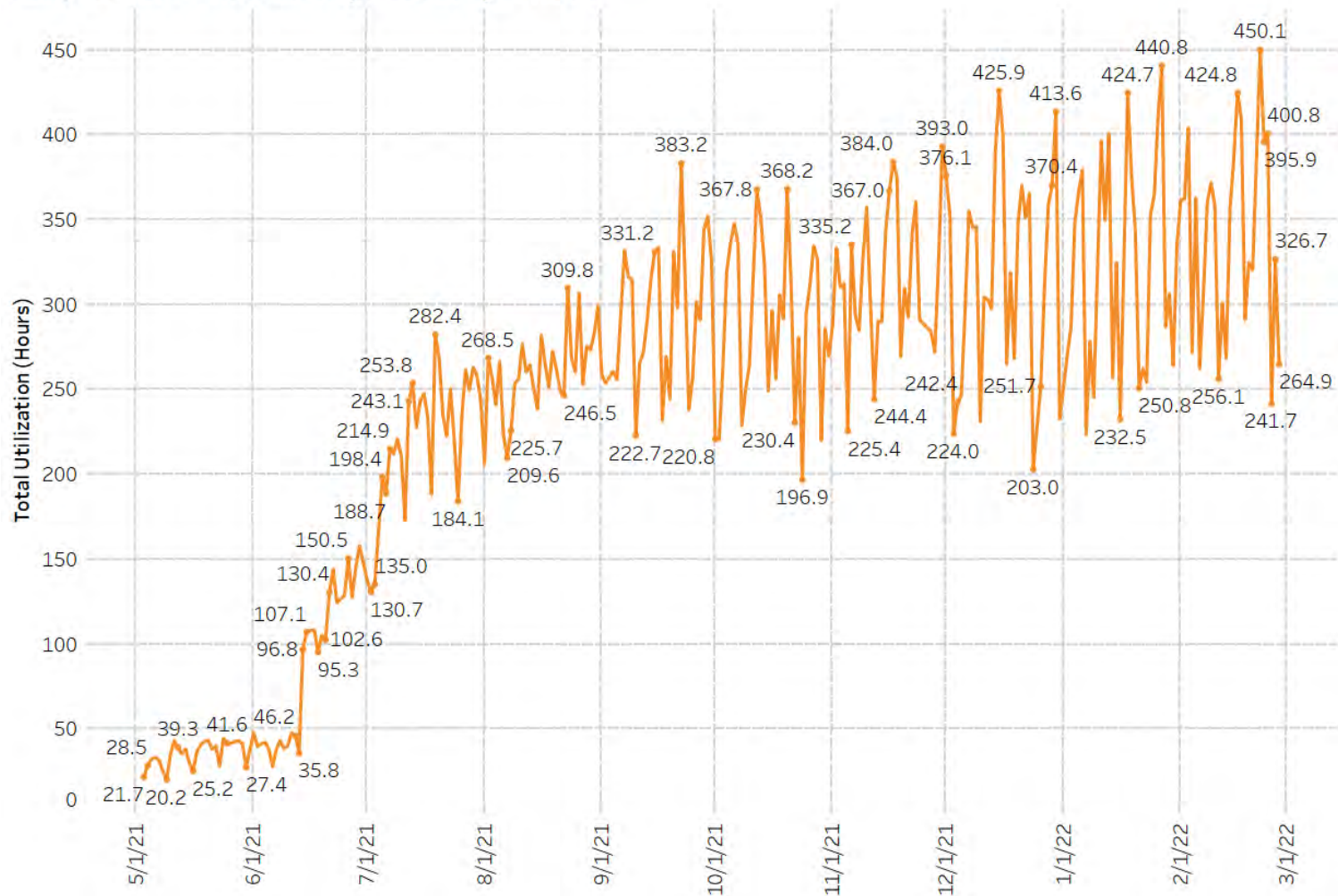
Public Access Computing

Daily Total Utilization (in Hours) - Branches



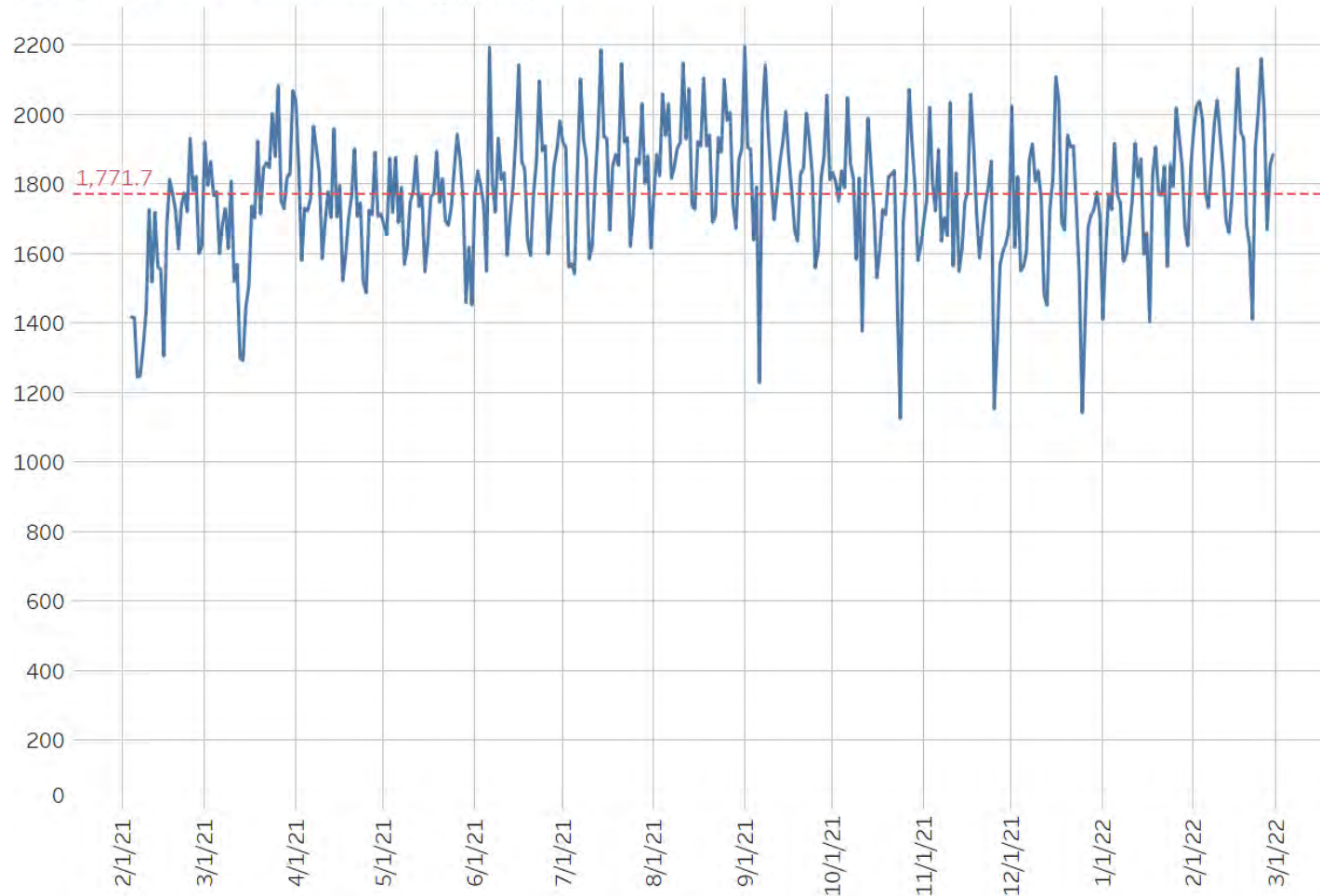
Public Access Computing

Daily Total Utilization (in Hours) - Main



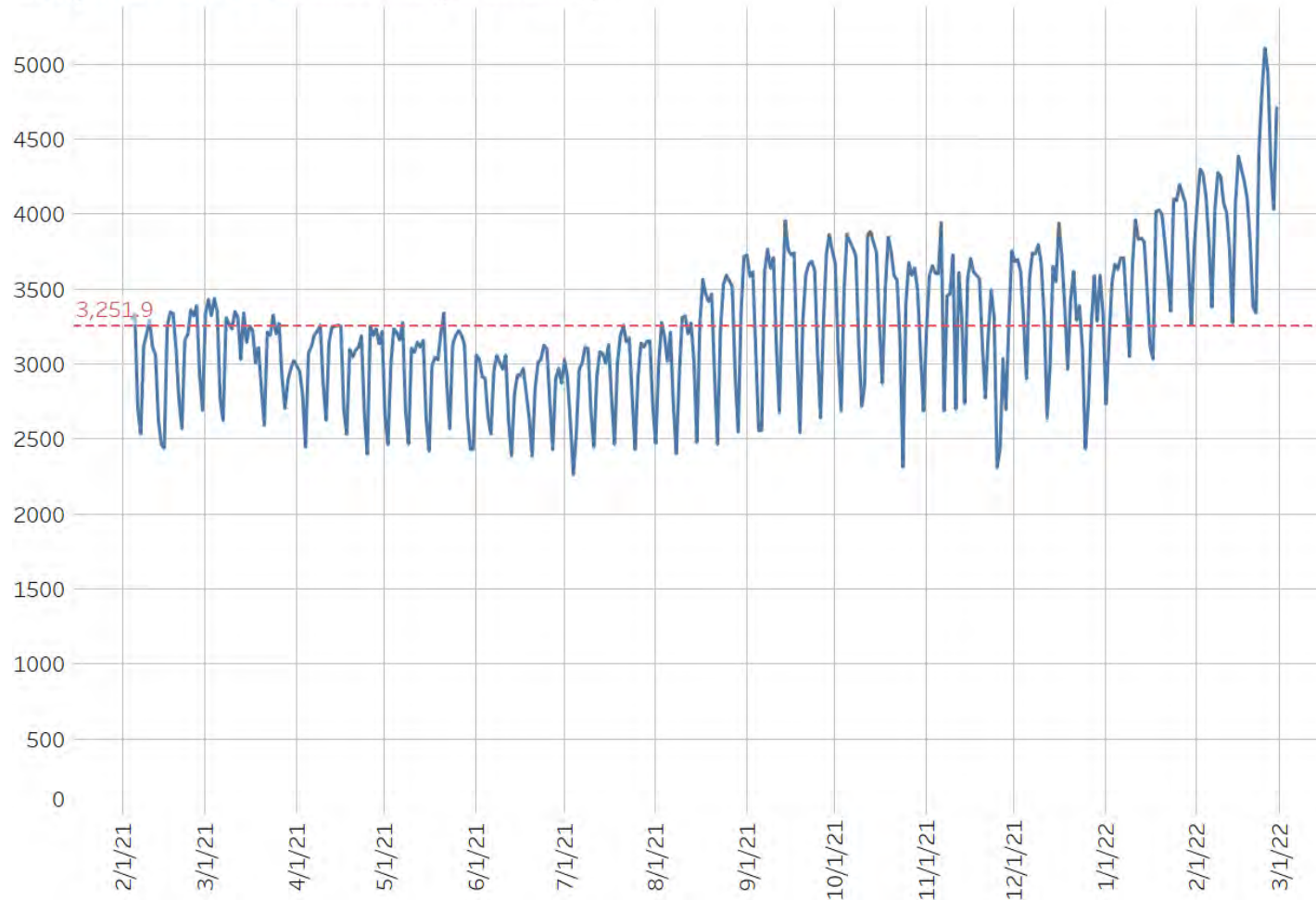
Public Access Computing

Daily # of WiFi Connections (Main)



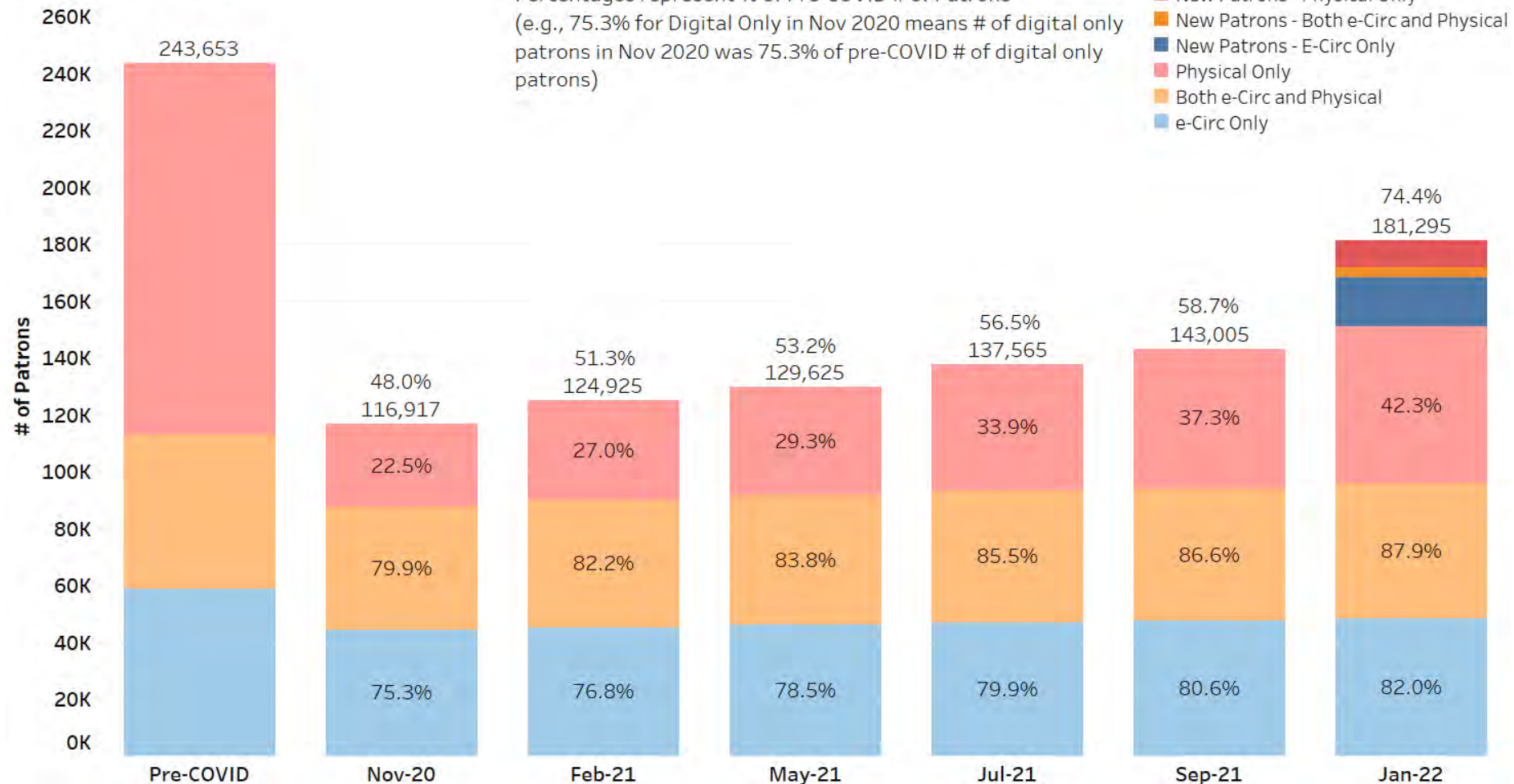
Public Access Computing

Daily # of WiFi Connections (Branches)



Patron Recovery Analysis

Patron Recovery



Testimonial

“Thank you so much. You have made my day so much better. I am so lucky to have the best library in the World in my city with the best group of librarians I could ask for.

I thank you for all the people you help during these trying times. I feel you are my "first responders" without you and your staff these past couple of years would have been so much harder. Thanks for working so hard and taking care of us.” Marshall Lawhon