



# Fiscal Year 26 & 27 Budget Update

**Mike Fernandez**  
Chief Financial Officer

August 21, 2025  
San Francisco Library Commission



# FY26 & 27 Budget Calendar

Tasks	October	November	December	January	February	March	April	May	June	July	August
Budget Development											
Departmental Budget Proposal Development	→										
Commission Budget Priority Discussion		→									
City Work Order Development	→										
Commission Budget Proposal Discussions			→								
Commission Budget Proposal Approval					→						
Budget Submittal to Controller					→						
Budget Negotiations											
Mayor's Budget Office Negotiations						→					
Board of Supervisors Budget Negotiations									→		
Budget Finalization											
Board of Supervisors Budget Adoption									→		
Mayor Signs Budget										→	
Fund Availability										→	



# Budget Overview



## Self Funded Department

### Rolling two-year budget:

FY26: July 1, 2025 – June 30, 2026

FY27: July 1, 2026 – June 30, 2027

## Budget Phases

Budget Development

Budget Negotiation

Budget Finalization

## Approved Budget

FY26: \$193.37M

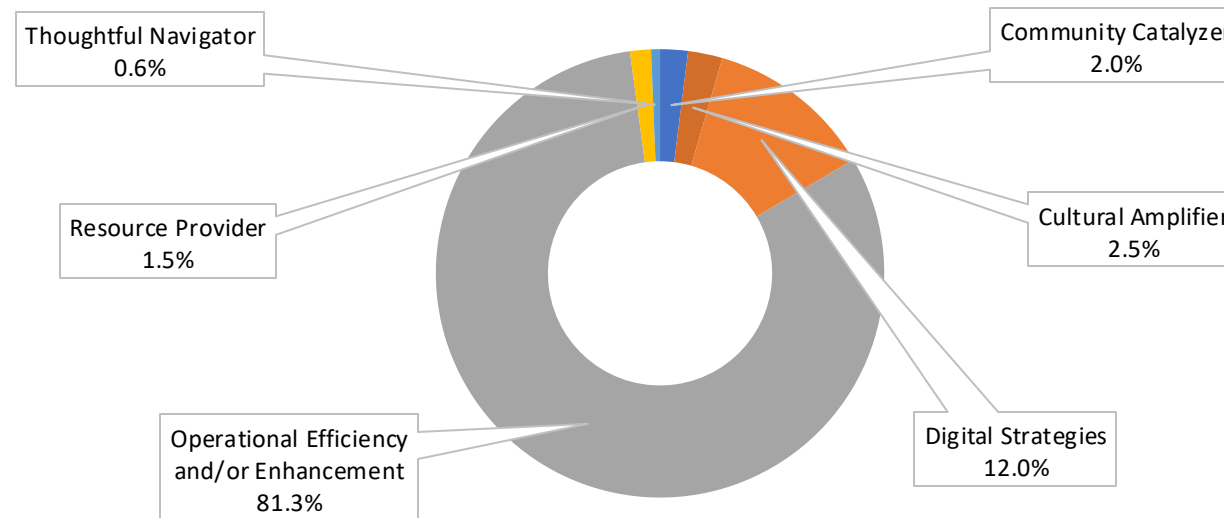
FY27: \$191.88M



# Proposed Investments Summary – February 2025

	One-Time	Ongoing	Total
<b>FY26</b>	5,785,000	32,739	5,817,739
<b>FY27</b>	2,315,379	100,417	2,415,796

## FY26 & 27 Total New Investment



Note: Capital is 93% of Operation Efficiency and/or Enhancement

# FY 26 & 27 Proposed Budget – February 2025

Source & Uses (budget in millions)	FY 25 Adopted Budget	FY26 Base Budget	FY26 Proposed Budget	Variance FY26 Proposed Budget to F25 Adopted Budget	Variance FY26 Proposed Budget to F26 Base Budget	FY27 Proposed Budget	Variance FY27 Proposed Budget to F26 Proposed Budget
<b>Sources</b>							
Property Tax Set Aside	79.33	79.65	79.65	0.32	0.00	79.33	-0.32
General Fund Baseline	103.60	104.85	104.85	1.25	0.00	110.77	5.92
Library Preservation Fund (LPF)	182.93	184.50	184.50	1.57	0.00	190.10	5.60
LPF Fund Balance	3.92	2.04	9.31	-3.92	-2.04	0.00	0.00
Library Fees	0.18	0.18	0.18	0.00	0.00	0.18	0.00
Annual Misc.	0.39	0.39	0.39	-0.01	0.00	0.59	0.21
Bequests	0.10	0.10	0.10	0.00	0.00	0.10	0.00
Total Other Sources	4.58	2.70	9.97	-3.92	-2.04	0.87	0.21
<b>Sources Total</b>	<b>187.51</b>	<b>187.20</b>	<b>194.47</b>	<b>-2.35</b>	<b>-2.04</b>	<b>190.97</b>	<b>5.81</b>
<b>Uses</b>							
Salary	80.11	83.26	83.31	3.19	0.05	86.59	3.28
Fringe	41.79	43.58	43.59	1.80	0.01	45.76	2.18
<b>Labor</b>	<b>121.90</b>	<b>126.84</b>	<b>126.89</b>	<b>5.00</b>	<b>0.06</b>	<b>132.35</b>	<b>5.46</b>
Collections	22.49	22.49	21.56	-0.93	-0.93	21.56	0.00
Svcs. Of Other Depts.	16.25	16.43	16.43	0.18	0.00	16.44	0.01
Non-Personnel Svcs.	11.48	10.58	11.26	-0.22	0.68	11.23	-0.03
City Grant to CBOs	0.83	0.85	1.02	0.20	0.18	1.02	0.00
Materials & Supplies	3.59	3.77	3.47	-0.12	-0.30	3.29	-0.18
CLLS & PLP Grants	0.11	0.11	0.11	0.00	0.00	0.11	0.00
Capital	9.87	7.10	12.60	2.73	5.50	1.90	-10.70
Equipment	1.00	0.85	1.14	0.13	0.29	0.00	-1.14
Reserves	0.00	0.46	0.00	0.00	-0.46	2.89	2.89
<b>Total Non-Labor</b>	<b>65.61</b>	<b>62.62</b>	<b>67.58</b>	<b>1.97</b>	<b>4.96</b>	<b>58.61</b>	<b>-8.97</b>
<b>Uses Total</b>	<b>187.51</b>	<b>189.46</b>	<b>194.47</b>	<b>6.96</b>	<b>5.01</b>	<b>190.97</b>	<b>-3.51</b>
<b>Surplus/(Shortfall)</b>	<b>0.00</b>	<b>-2.26</b>	<b>0.00</b>	<b>-0.00</b>	<b>2.26</b>	<b>0.00</b>	<b>0.00</b>



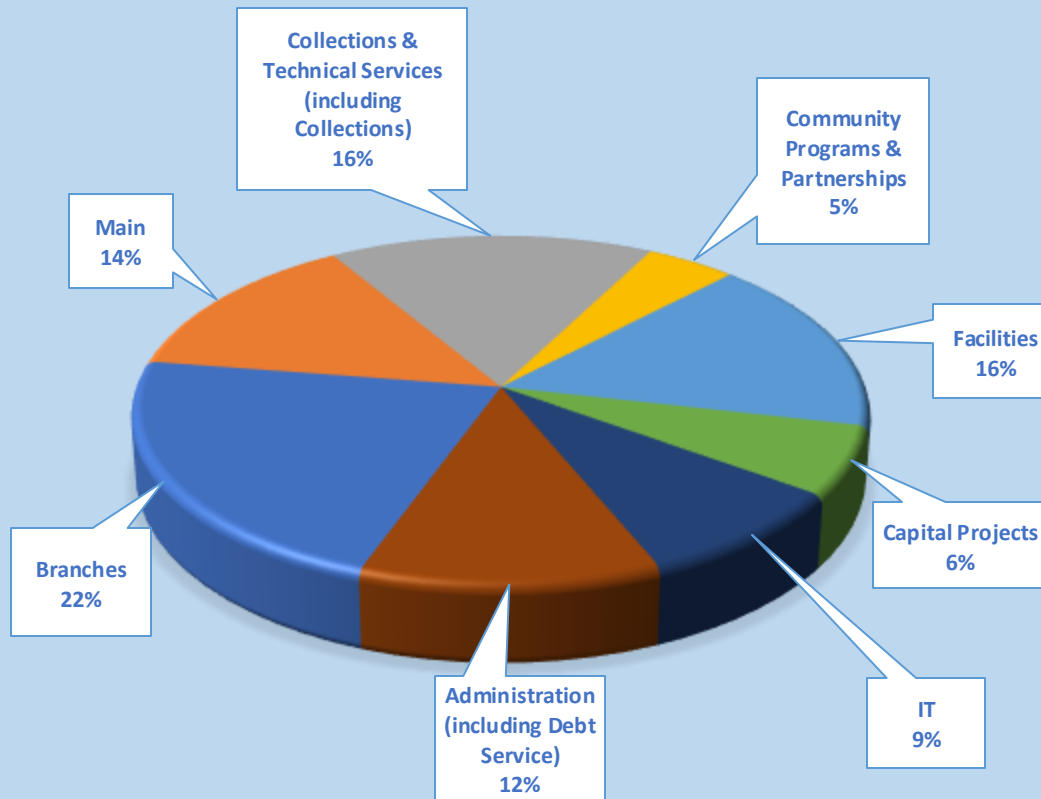
# Budget Sources

Source Type (budget in millions)	FY 25 Approved Budget	FY 26 Approved Budget	FY 27 Approved Budget
Library Preservation (LPF)	\$182.93M	\$185.85M	\$191.18M
LPF Fund Balance	\$03.92M	\$06.84M	\$00.00M
Library Fees	\$0.18M	\$0.18M	\$0.18M
Misc. Annual Sources	\$0.39M	\$0.41M	\$0.43M
Bequests	\$0.10M	\$0.10M	\$0.10M
<b>Total</b>	<b>\$187.51M</b>	<b>\$193.37M</b>	<b>\$191.88M</b>



# Budget Uses by Division

**FY26 APPROVED BUDGET BY DIVISION**  
**\$193.37M**



SFPL Division Budgets (in millions)	FY25 Approved Budget	FY26 Approved Budget	FY27 Approved Budget
Branches	\$40.84M	\$42.25M	\$43.97M
Main	\$26.31M	\$26.98M	\$28.13M
Collections & Technical Services (including Collections)	\$32.06M	\$31.51M	\$31.91M
Community Programs & Partnerships	\$08.31M	\$08.76M	\$08.45M
Facilities	\$31.43M	\$31.60M	\$32.85M
Capital Projects	\$09.87M	\$12.35M	\$01.90M
IT	\$15.88M	\$17.04M	\$17.07M
Administration (including Debt Service)	\$22.81M	\$22.87M	\$27.60M
<b>Total</b>	<b>\$187.51M</b>	<b>\$193.37M</b>	<b>\$191.88M</b>

Funded Positions by Divisions (Net Full-Time Equivalents)	FY 25 Approved FTE	FY26 Approved FTE	FY27 Approved FTE
Branch	261.19	261.58	261.58
Main	166.59	165.18	165.18
Collections & Technical Services	59.19	59.19	59.19
Community Programs & Partnerships	37.36	41.43	38.43
Facilities	132.62	132.01	131.98
IT	36.05	36.87	36.87
Administration	30.73	39.97	42.6
<b>Total</b>	<b>723.73</b>	<b>736.23</b>	<b>735.83</b>

Note: The FTE change is driven by a change in calculation of Attrition Savings in the new system. The additional FTE do not reflect nor enable the Library to hire additional positions.

# Key Budget Changes: Proposed vs. Approved

LPF revenue increased:

▲ \$1.4M in FY26

▲ \$1.1M in FY27

Fund Balance use reduced:

▼ \$2.5M in FY26

Services of Other Depts. increased:

▲ \$0.1M in FY26

Labor budget decreased:

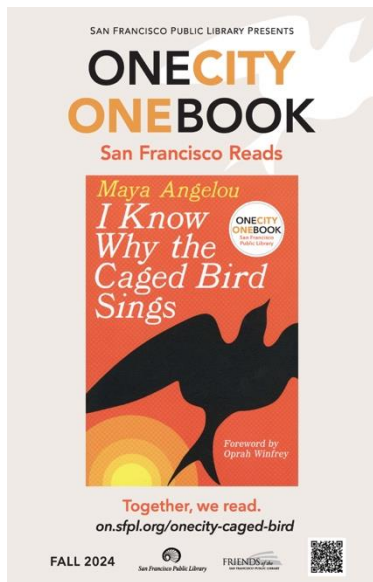
▼ \$0.6M in FY26

## Board of Supervisors Reductions

Fiscal Year	One-Time	Ongoing	Total
FY26	\$210,000	\$415,502	\$625,502
FY27	\$0	\$428,354	\$428,354



# Friends of the SFPL Annual Grant



**FY26 Annual Grant Amount:  
\$1,072,600**

\$598,783 in Unrestricted Funds

\$473,817 in Restricted Funds

**The Friends Annual Grant Monies Support:**

One City One Book: SF Reads

Summer Stride

Branch Open House Events

Special Collections

Innovation

**FRIENDS** *of the*  
SAN FRANCISCO PUBLIC LIBRARY



THANK YOU

