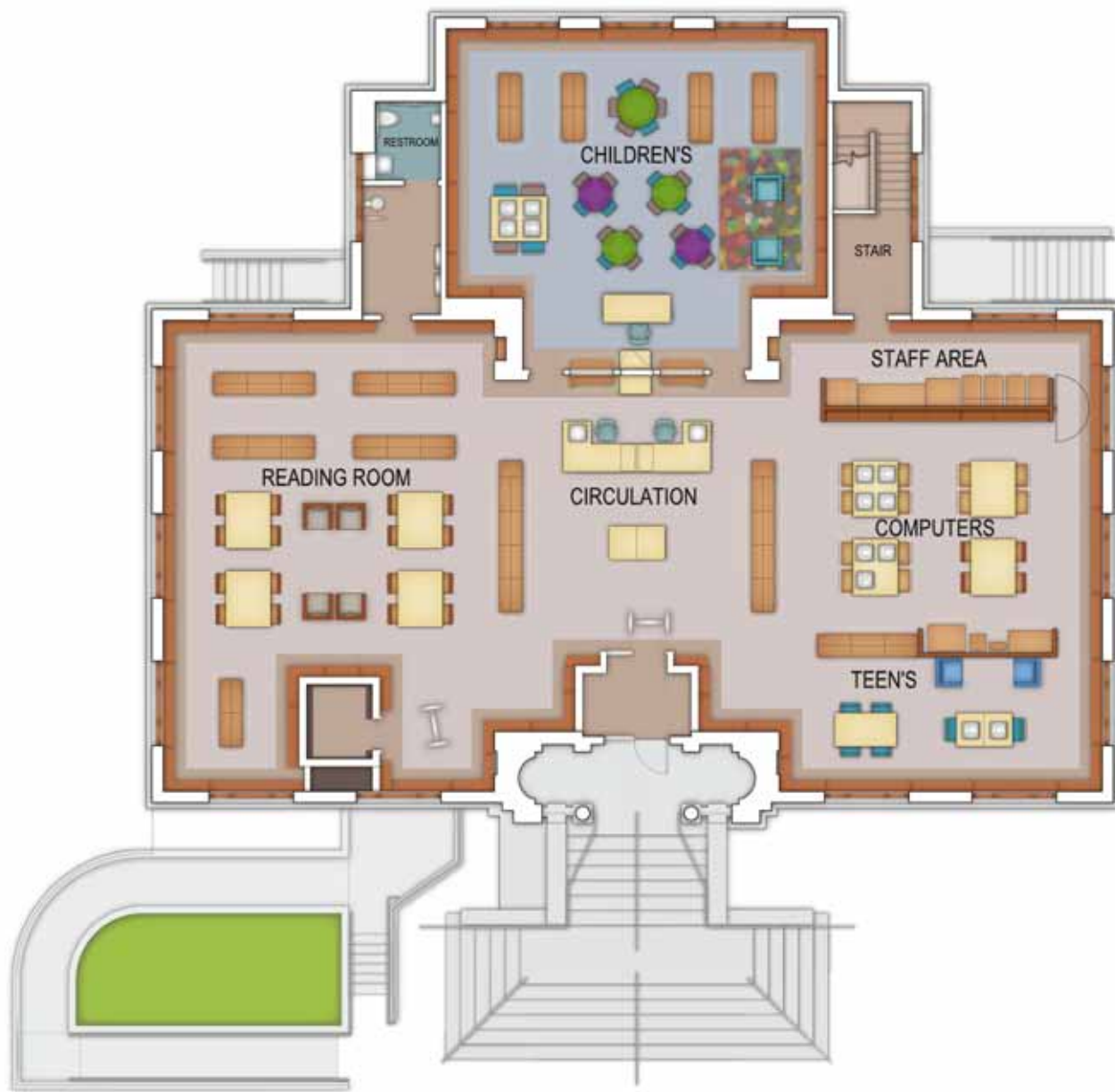




PERSPECTIVE VIEW
FIELD PAOLI | JOSEPH CHOW

SAN FRANCISCO PRESIDIO BRANCH LIBRARY
2 FEBRUARY 2009

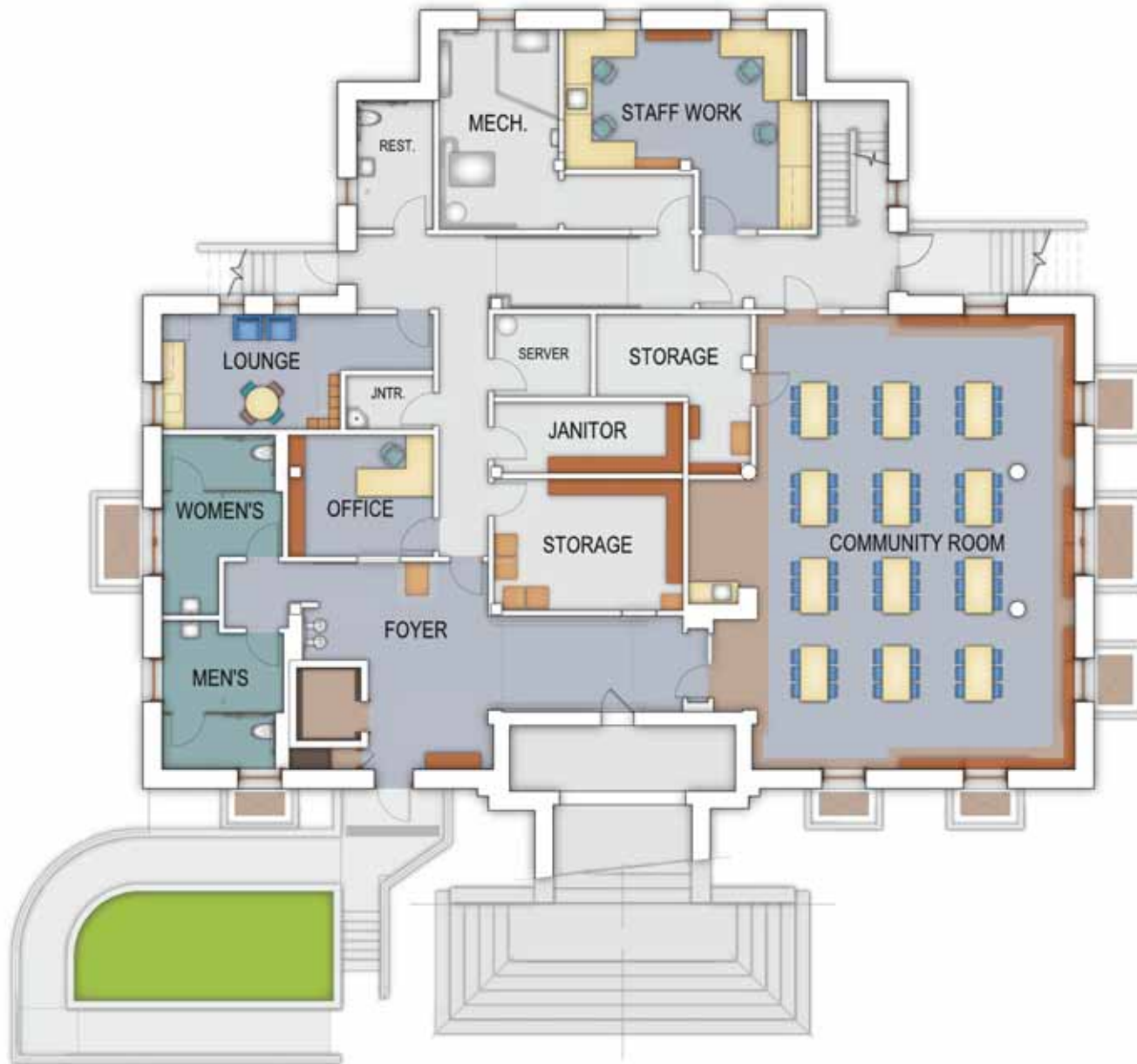




UPPER LEVEL PLAN
FIELD PAOLI | JOSEPH CHOW

SAN FRANCISCO PRESIDIO BRANCH LIBRARY
2 FEBRUARY 2009





LOWER LEVEL PLAN
 FIELD PAOLI | JOSEPH CHOW

SAN FRANCISCO PRESIDIO BRANCH LIBRARY
 2 FEBRUARY 2009



PROJECT DESCRIPTION

The Presidio Branch Library serves all or part of the Pacific Heights, Presidio Heights and Laurel Heights neighborhoods. The project scope is an interior remodel to improve patron service, staff work areas and accessible access while preserving the historic character of this 1921 Italian Renaissance Carnegie building. There will be no addition to the existing 10,205 square feet. Our goal is to provide a refreshed 21st Century Library to meet the demands of today and the future with more computers, wireless access, self-check stations, multi-media AV in the Program Room, and improved staff work areas and ergonomics. We aim to achieve a LEED Silver Commercial Interior certification.

The interior remodel includes all new finishes, lighting, FF & E, upgraded electrical and mechanical systems; improved meeting room and new public toilet facilities. We are correcting access issues at the exterior ramps, exterior book drop, and elevator. There is a designated Teen space; interactive learning in the Children's area; and slightly expanded capacity in new shelving with new tables and chairs throughout. We are refurbishing the perimeter wood shelving. A single circulation/reference desk is centrally located for efficiency and visual supervision of the Main reading room. The Program Room will receive new finishes, tables and chairs, AV equipment, white boards, and a kitchenette. The windows can be remodeled to improve natural ventilation and new window coverings will reduce glare and heat gain.

The exterior renovations to brick and terra cotta facades and the main entry steps has been added to the project scope. The SF Garden Club is spearheading a volunteer effort to design and implement the Landscape design and improvements to the green space.

PROJECT DESCRIPTION

FIELD PAOLI | JOSEPH CHOW

FIXTURE COUNT

		EXISTING	PROPOSED
LOWER LEVEL	CHAIRS	43 STACKING	82 STACKING
	COMPUTERS	2 PUBLIC	16 LAPTOPS FOR COURSES
	SHELVING	262 LF	262 LF
UPPER LEVEL	CHAIRS	38 READER, 7 COMPUTER, 5 LOUNGE, 3 SOFA = 53 TOTAL PUBLIC	51 READER, 13 COMPUTER, 8 LOUNGE, = 72 TOTAL PUBLIC
	TABLES	8 READING, 3 COMPUTER, = 11 TABLES TOTAL	12 READING, 4 COMPUTER = 16 TABLES TOTAL
	COMPUTERS	7 PUBLIC	14 PUBLIC, UP TO 16 FUTURE LAPTOPS FOR LENDING PROGRAM
	SHELVING	2,383 LF	2,550 LF

