



San Francisco Public Library
OCEAN VIEW BRANCH LIBRARY
COMMUNITY MEETING | 03.09.2019



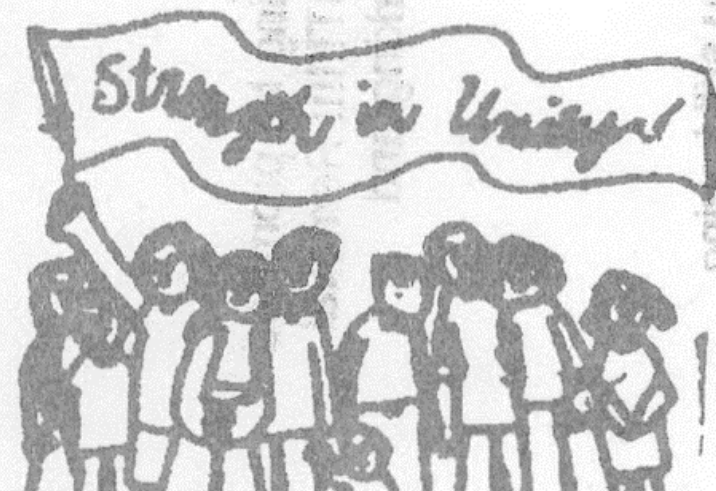
San Francisco Public Library

WELCOME!

- Introductions
- Project Overview
- Library design trends & Guiding Principles
- Discussion on services, needs and priorities
- Existing building
- Project Schedule
- Upcoming & Survey

PROJECT OVERVIEW

OMI-NIA needs:
your presence,
your ideas,
...and your financial support
to continue our work in the OMI
...your neighborhood!
Become part of the Solution... Today!









GUIDING PRINCIPLES

- Libraries for the 21st Century
- Flexible and Adaptable Building Designs
- Preservation of Historic Carnegie Libraries
- Multifunctional Community Program Areas
- Transparency and Ease of Wayfinding
- Environmental Responsiveness

GUIDING PRINCIPLE: Library for the 21st Century



SAN FRANCISCO PUBLIC WORKS
CITY & COUNTY OF SAN FRANCISCO



OCEAN VIEW BRANCH LIBRARY COMMUNITY MEETING
San Francisco Public Library | 03.09.2019

GUIDING PRINCIPLE: Flexible and Adaptable Building Design



SAN FRANCISCO PUBLIC WORKS
CITY & COUNTY OF SAN FRANCISCO



OCEAN VIEW BRANCH LIBRARY COMMUNITY MEETING
San Francisco Public Library | 03.09.2019

GUIDING PRINCIPLE: Multifunctional Community Areas



SAN FRANCISCO PUBLIC WORKS
CITY & COUNTY OF SAN FRANCISCO



OCEAN VIEW BRANCH LIBRARY COMMUNITY MEETING
San Francisco Public Library | 03.09.2019

GUIDING PRINCIPLE: Multifunctional Community Areas



SAN FRANCISCO PUBLIC WORKS
CITY & COUNTY OF SAN FRANCISCO

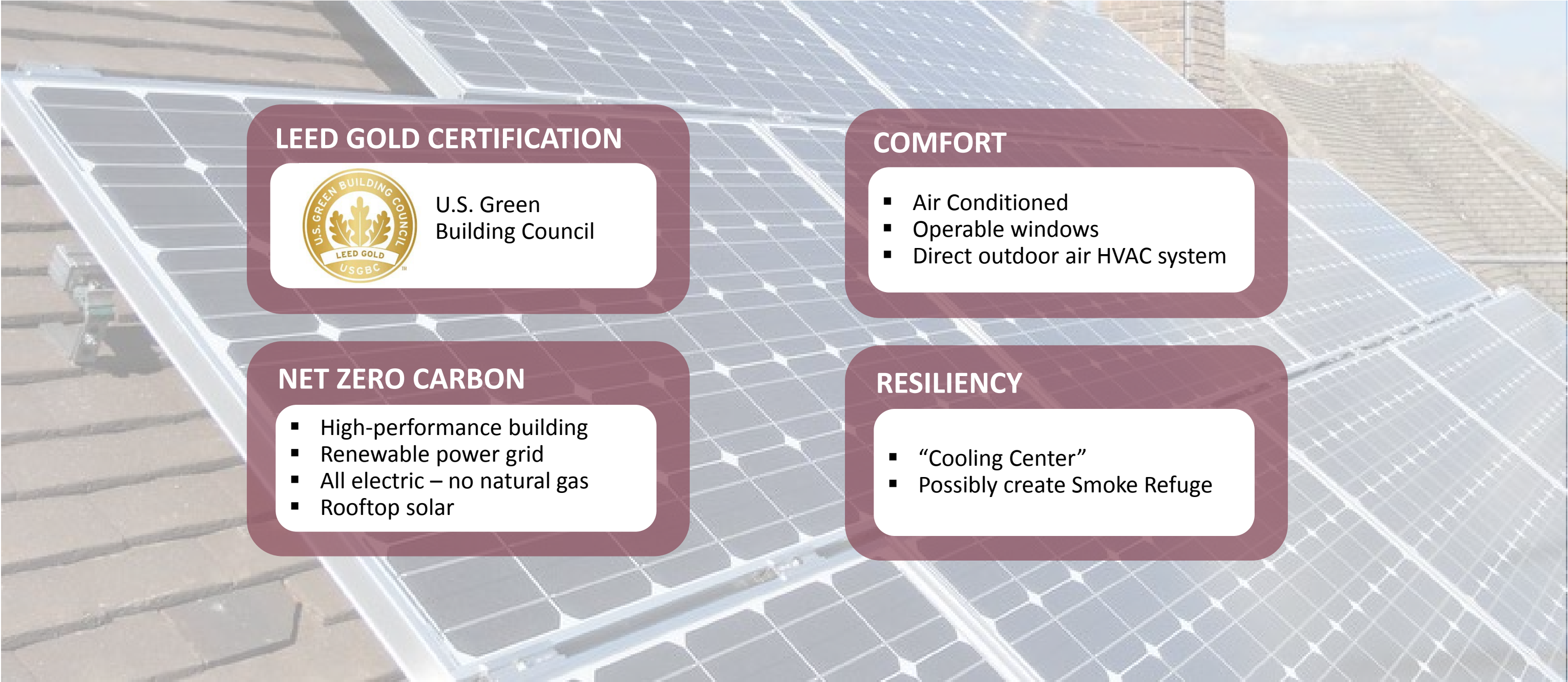


OCEAN VIEW BRANCH LIBRARY COMMUNITY MEETING
San Francisco Public Library | 03.09.2019

GUIDING PRINCIPLE: Transparency and Ease of Wayfinding



GUIDING PRINCIPLE: Environmental Responsiveness



LEED GOLD CERTIFICATION



U.S. Green
Building Council

COMFORT

- Air Conditioned
- Operable windows
- Direct outdoor air HVAC system

NET ZERO CARBON

- High-performance building
- Renewable power grid
- All electric – no natural gas
- Rooftop solar

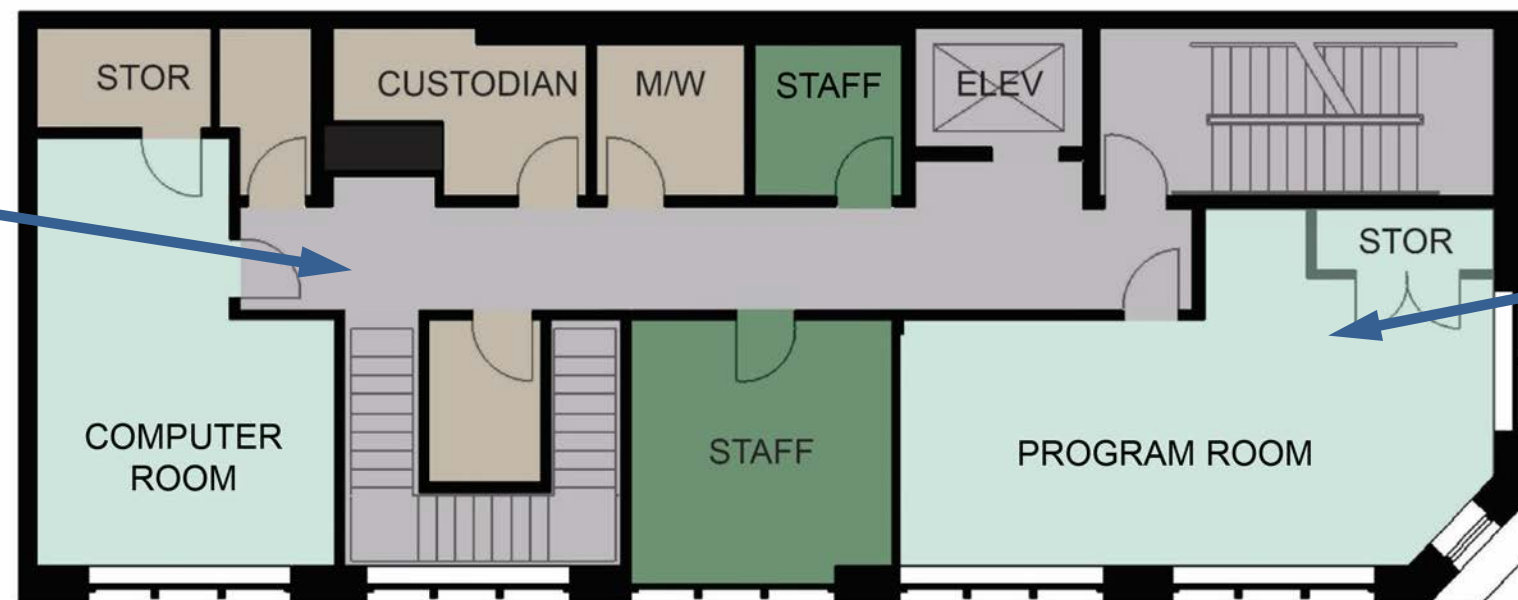
RESILIENCY

- “Cooling Center”
- Possibly create Smoke Refuge



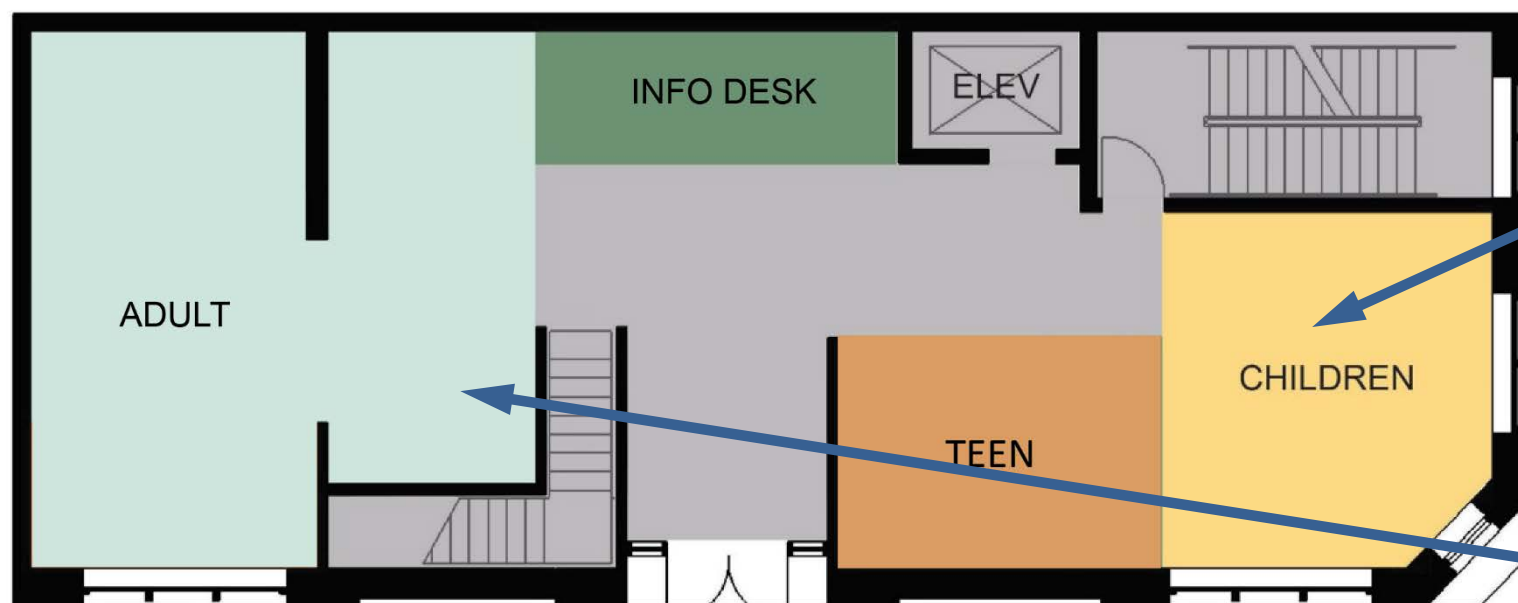
DISCUSSION ON SERVICES, NEEDS, AND PRIORITIES

EXISTING BUILDING



SECOND FLOOR - EXISTING

0 10'



FIRST FLOOR - EXISTING

4,300 SF 2,150 SF/Floor

0 10'



EXISTING BUILDING



SAN FRANCISCO PUBLIC WORKS
CITY & COUNTY OF SAN FRANCISCO



OCEAN VIEW BRANCH LIBRARY COMMUNITY MEETING
San Francisco Public Library | 03.09.2019

EXISTING BUILDING



SAN FRANCISCO PUBLIC WORKS
CITY & COUNTY OF SAN FRANCISCO



OCEAN VIEW BRANCH LIBRARY COMMUNITY MEETING
San Francisco Public Library | 03.09.2019

EXISTING BUILDING



SAN FRANCISCO PUBLIC WORKS
CITY & COUNTY OF SAN FRANCISCO



OCEAN VIEW BRANCH LIBRARY COMMUNITY MEETING
San Francisco Public Library | 03.09.2019

WHY RENOVATE NOW?

- One of three branches not updated in BLIP program
- Library service styles have changed
- Technology has changed in libraries
- 20 year old building systems at end of service life

STAFF COMMENTS...

- Program room can't be used after hours
- Program room is too small
- Building is not easily recognized as a library
- Two-story building poses operational challenges
- Current site limits expansion

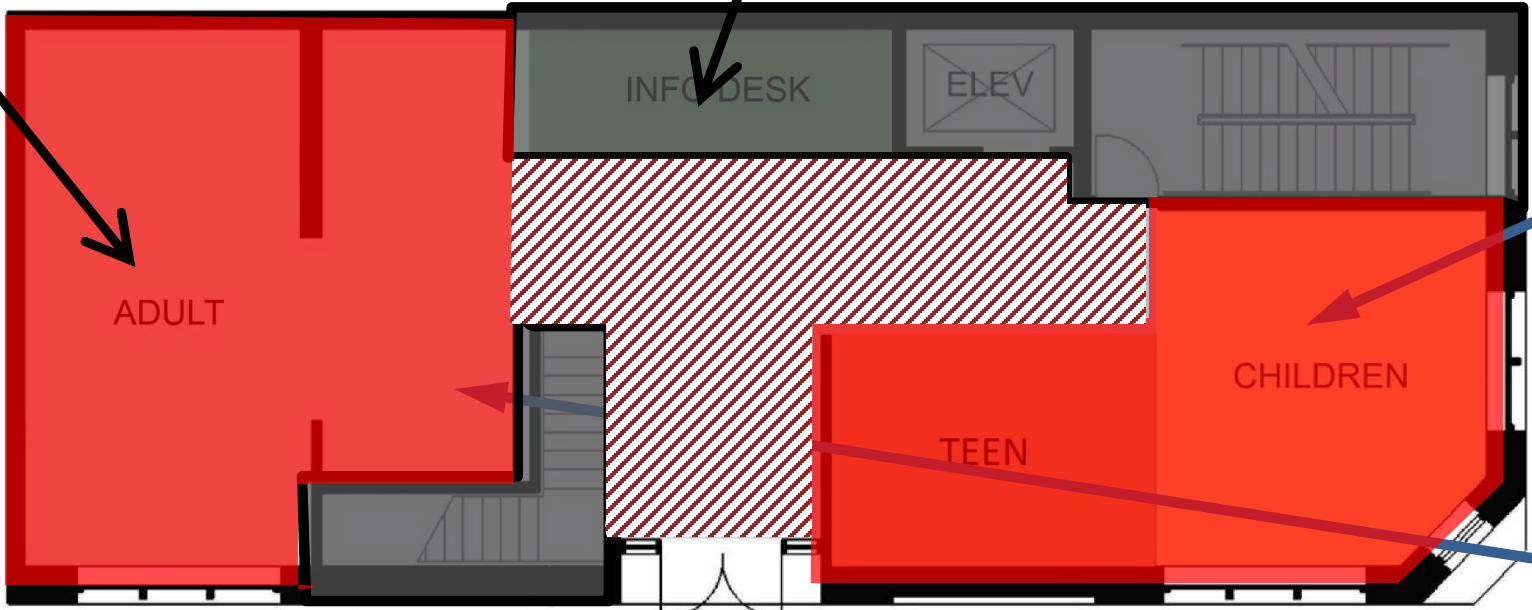
EXISTING BUILDING - INEFFICIENCIES

Closed areas Enclosed hallway



SECOND FLOOR - EXISTING

Closed areas



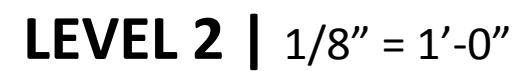
FIRST FLOOR - EXISTING

4,300 SF 2,150 SF/Floor

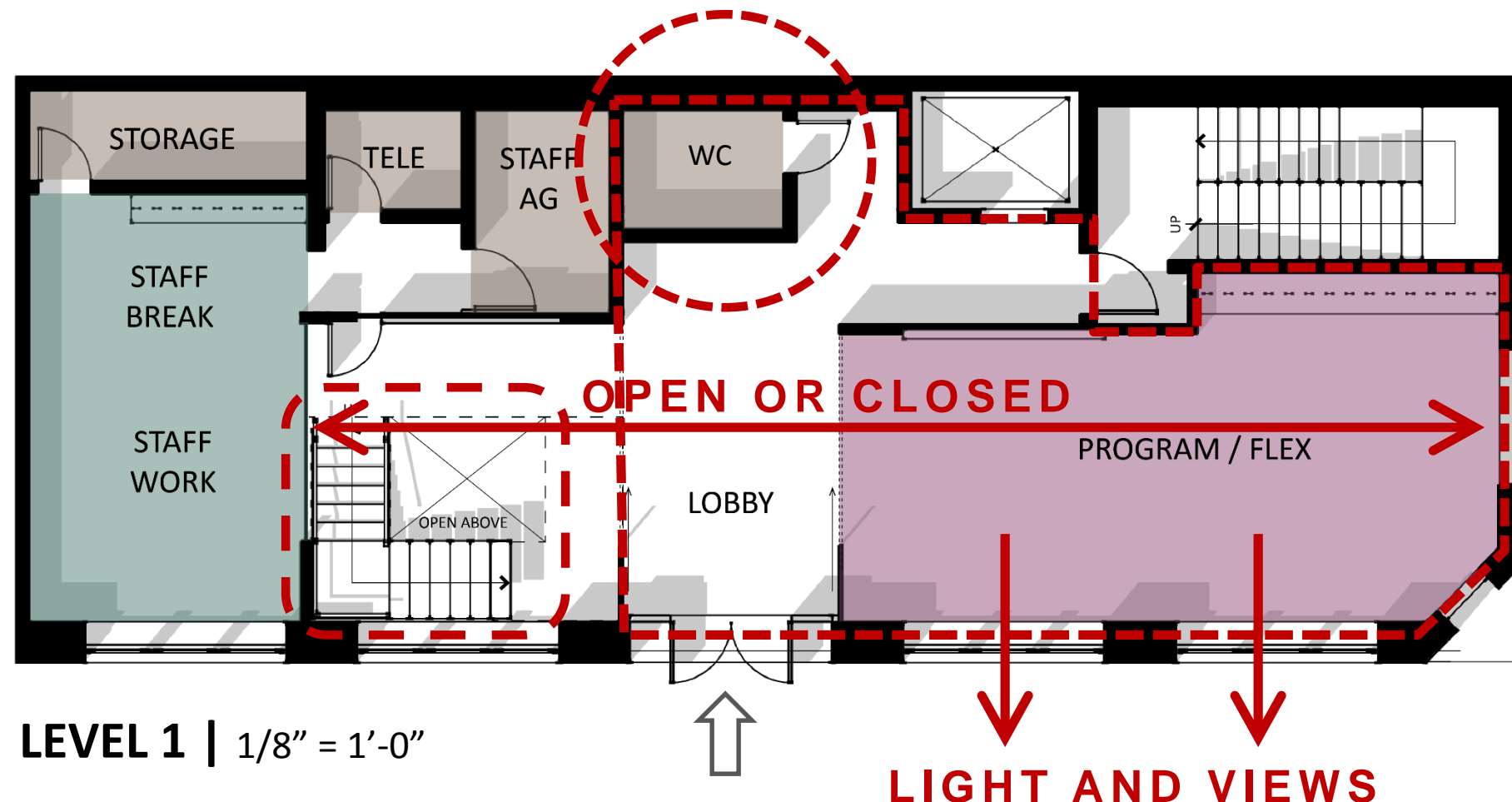


Public areas separated by closed areas and hallways

Second Floor:
Reading and collections
Open floor plan
Open stair
Restrooms on both floors
Dedicated Teen Area

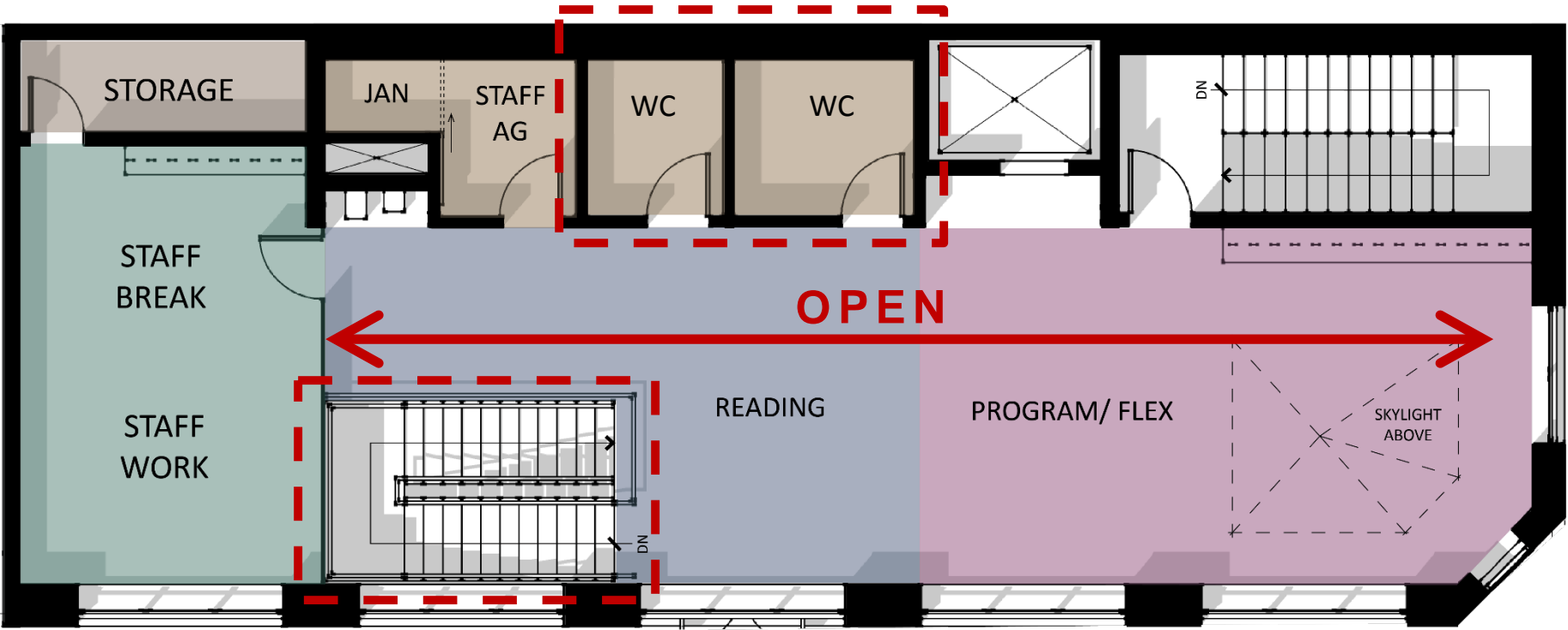


First Floor Program Room:
After-hours programs
Versatile programming
Integrated into library
Light and views



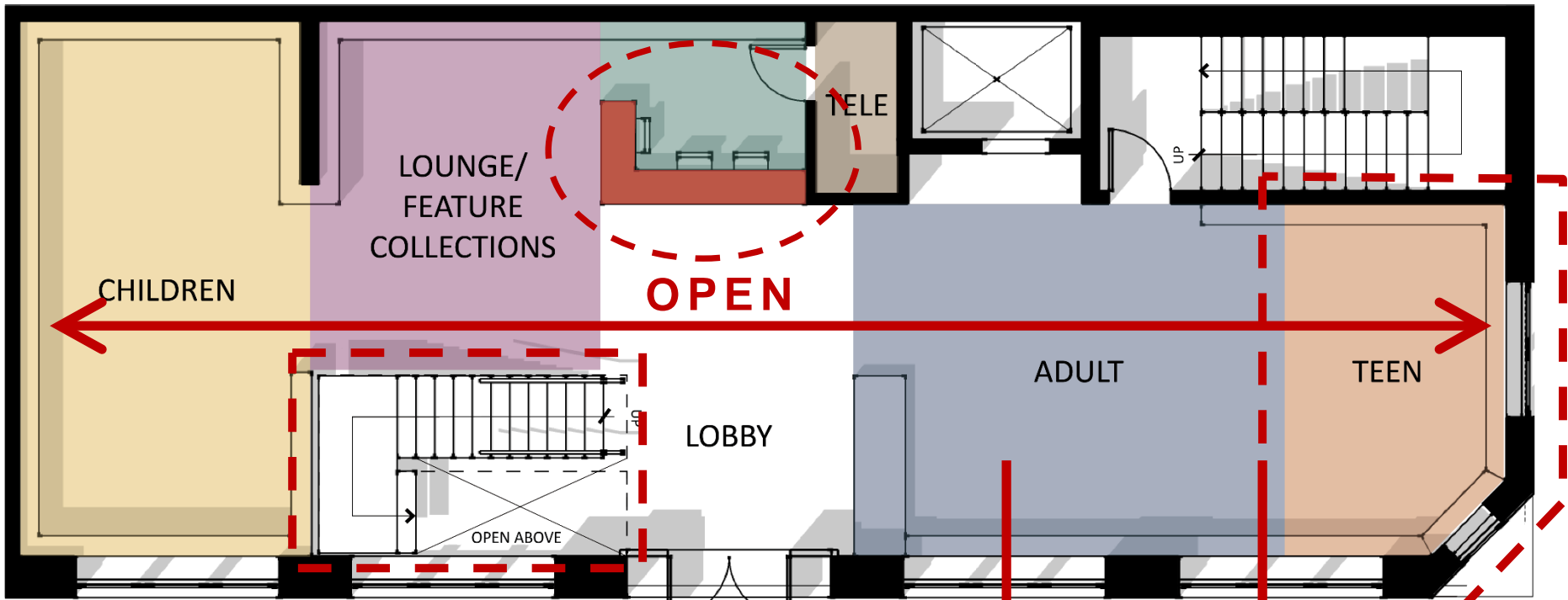
FLOOR PLAN TEST FIT
EXAMPLE B

Second Floor:
 Open floor plan
 Flexible Space for Programs
 Two Public Restrooms



LEVEL 2 | 1/8" = 1'-0"

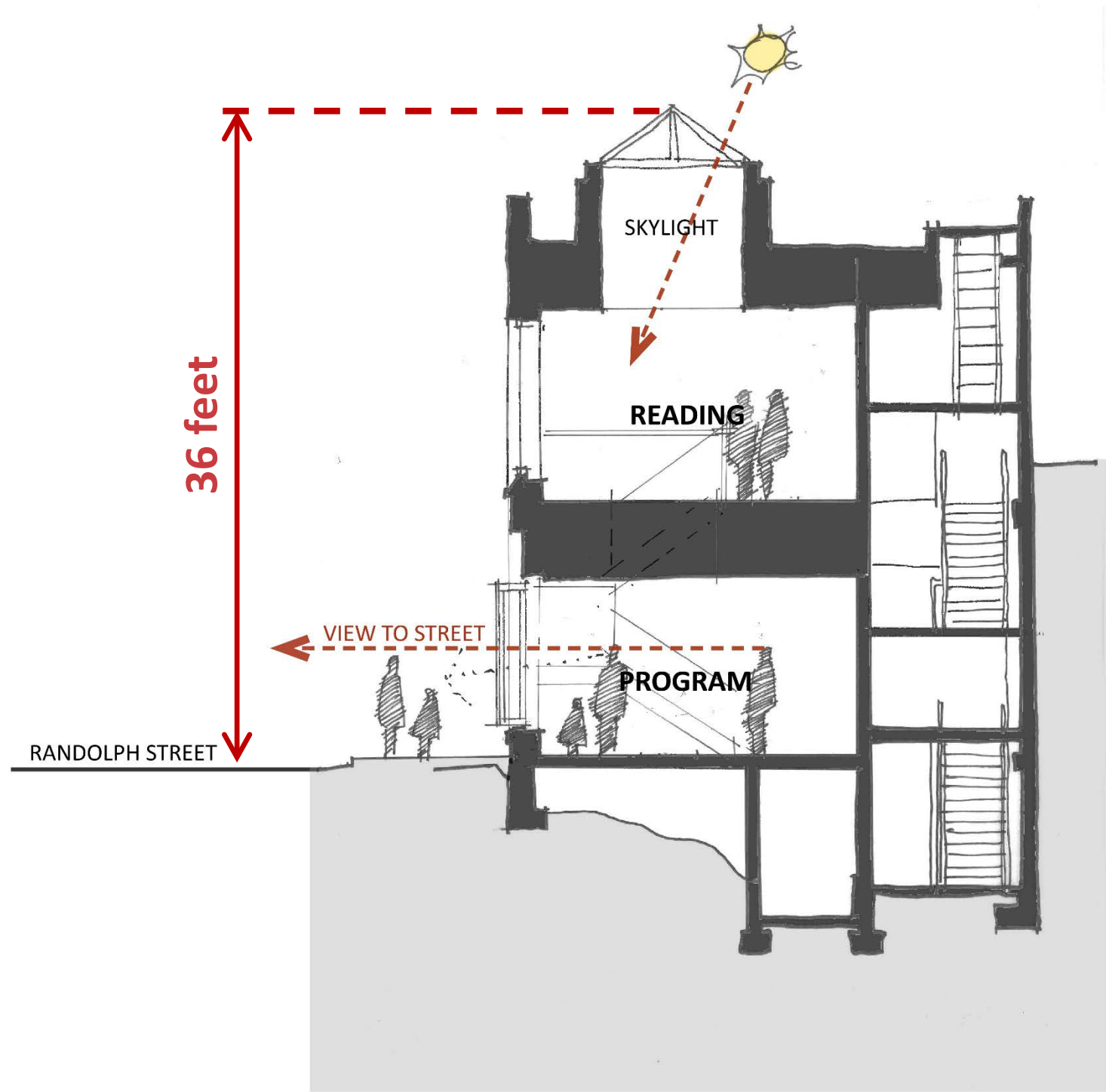
First Floor:
 Library reading & collections
 Information Desk at entry
 Open plan & open stair
 Teen Area
 Light and views



LEVEL 1 | 1/8" = 1'-0"

LIGHT AND VIEWS

BUILDING SECTION



QUESTIONS AND ANSWERS

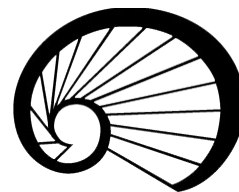
RENOVATION PROJECT SCHEDULE

Concept designs	Early Fall 2019
Community engagement	Fall 2019
Design documentation	Fall 2019 - Summer 2020
Bidding	Fall 2020
Construction start	Winter 2021
Library reopening	Early 2022

UPCOMING...

- Community Outreach
- Community Survey
- Architectural Concept Designs

Please complete the exit survey. Thank you!



San Francisco Public Library