

SUPPLEMENTAL BUDGET FY 19

January 17, 2019
Library Commission



San Francisco Public Library

ERAF BACKGROUND

- ERAF (Educational Revenue Augmentation Fund) is a state program that shifts a portion of local property taxes to public school systems in each county
- Remaining funds are returned to local governments
- The City estimates an excess ERAF of \$415 M in FY 19
 - The Controller recommends treating these revenues as one-time in nature given the significant legislative risk
- The Library is expected to receive approximately \$9.5 M from excess ERAF through a mandatory baseline contribution

SEISMIC MOAT REPLACEMENT

BACKGROUND

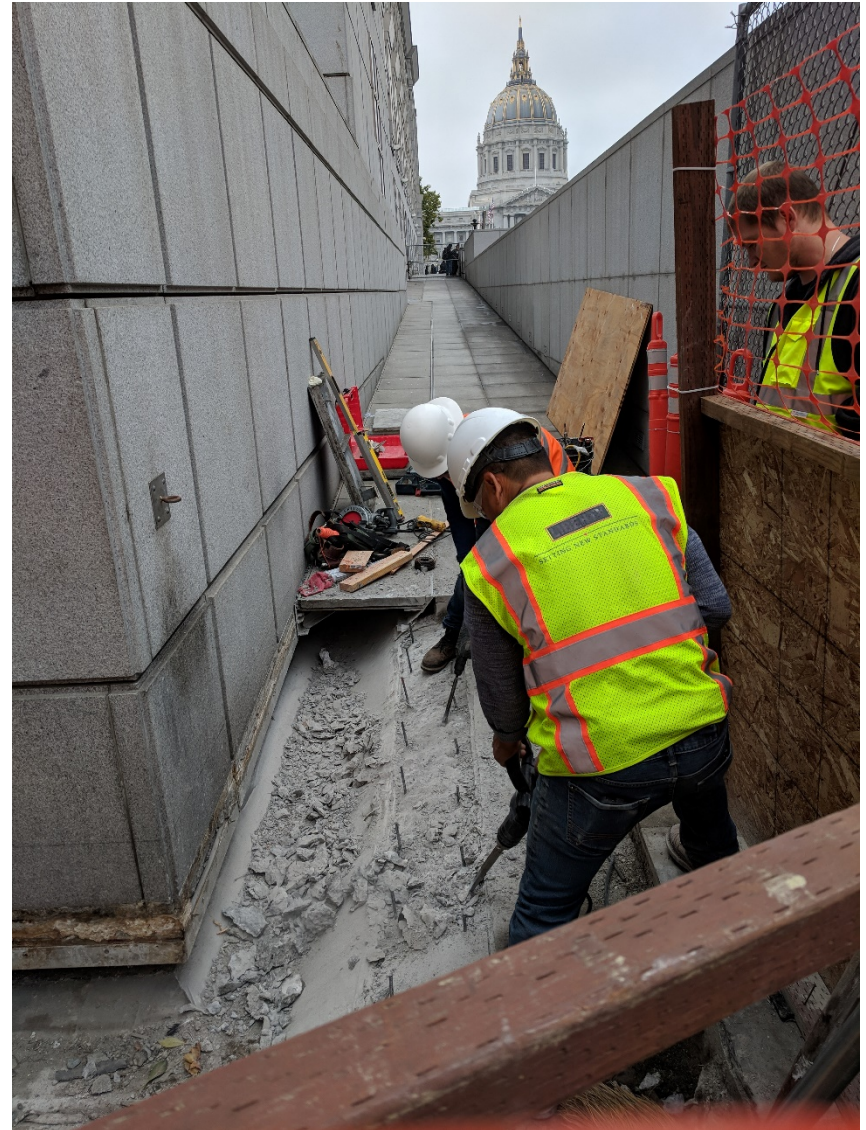
- 22 year old moat is deteriorating and causing environmental health issues inside the library
- Public Works recently completed a test section of the moat replacement

PROJECT VISION

- Maintains the infrastructure of the Main Library
- Improves ADA path of travel
- Addresses environmental issues within library building
- Repairs and replaces cracked granite
- Enhances safety and security around Hyde Street staff entrance

PROJECT ALLOCATION

Approximate replacement cost: \$4M



SEISMIC MOAT REPLACEMENT



DPW Test Section



Hyde St. Entrance



Cracked Granite

FULTON ST. ACTIVATION PROGRAM

PROJECT VISION

Positive activation in line with Civic Center Commons & Public Realm Plan

- Reading garden & teaching space
- Public gathering space
- Safe and secure, accessible during hours of operation

New entrance for families to enter Children's Center on Fulton

PROJECT ALLOCATION

- Up to \$5.5 M
- Project estimate pending





FULTON MALL: Lawn terraces between the Library and the Asian Art Museum provide a place to play and hang out, and are framed by benches and places to sit in sun or shade. New pavilions and seating on the Library terrace create a quiet place to people-watch.



REQUESTED ACTION

Approve the supplemental appropriation up to \$9.5 M for FY 19 for the Main Library capital projects